



SEMI-HI / HI-LIFT PTO SUPPLEMENT

Table of Contents

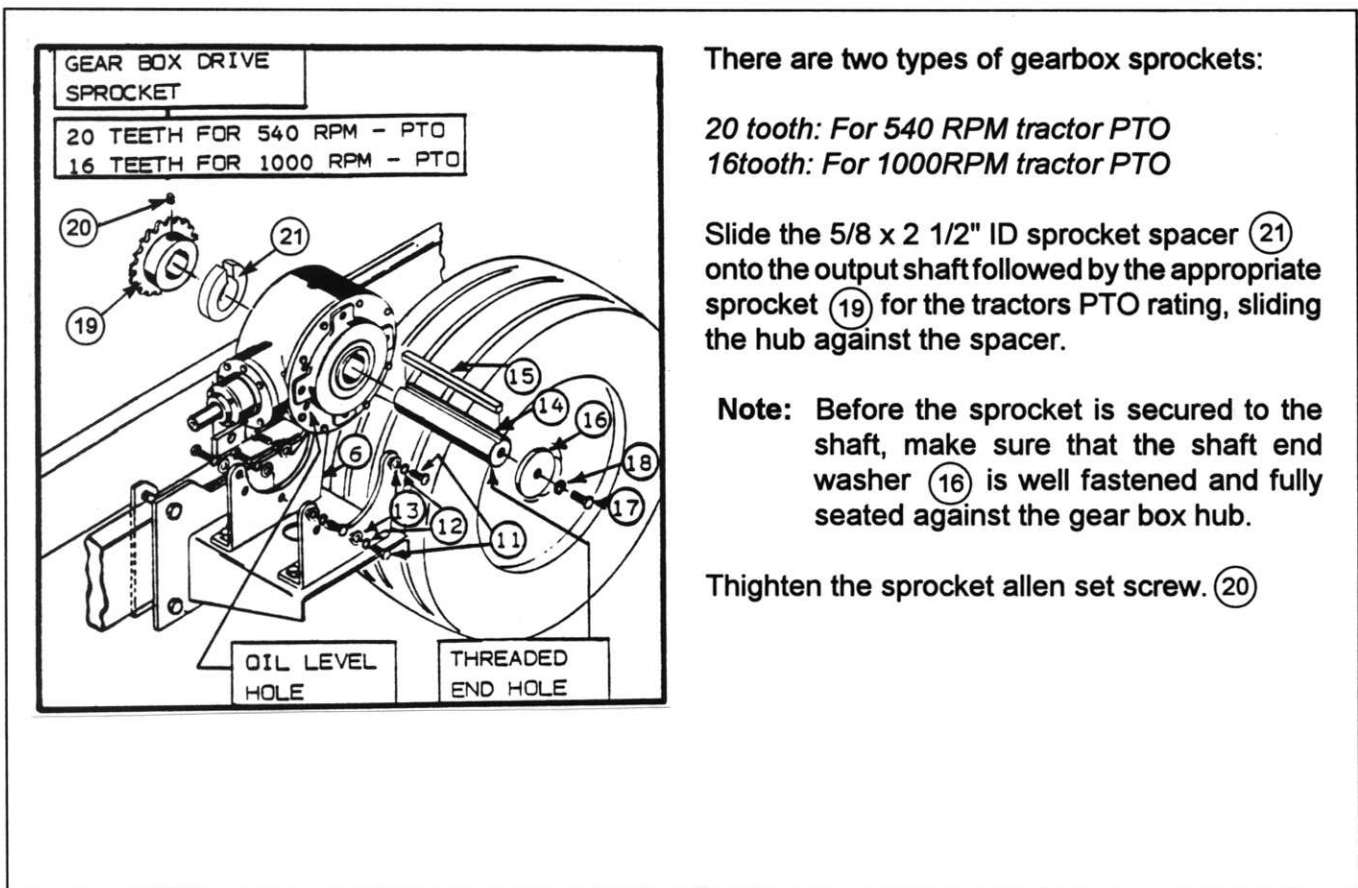
ASSEMBLY	2
1.0 Installing the PTO drive line components	2
2.0 PARTS	5
2.1 Ordering Information	5
2.2 Parts Table of Contents	5
Slider Shaft	6
Drive Shaft	7
Gear Box 6.66:1	8
PTO Drive Layout	10

1.0 INSTALLING THE PTO DRIVE LINE COMPONENTS

This supplementary assembly section is to replace the corresponding areas indicated.

Hi-Lift Manual: Page 18 (installation of gearbox sprocket)

Semi-Hi Manual: Page 17 (installation of gearbox sprocket)



ASSEMBLY

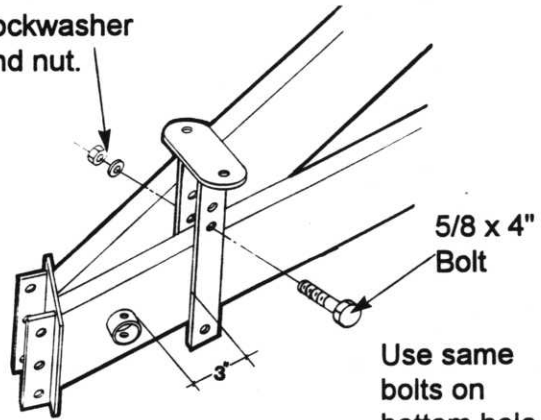
Hi-lift Manual: Section VI; Subsection G
Semi-Hi Manual: Section VI; Subsection J

1. Locate the drive line bearing support "saddle fashion" over the hitch pole outer rail, about 3" back from the side wind jack mounting bracket.

Using two 5/8 x 4" hex bolts with lockwashers and nuts secure bracket to hitch pole finger tight.

Note: For most situations, the second hole from the top is used as the upper bolt hole (see diagram)

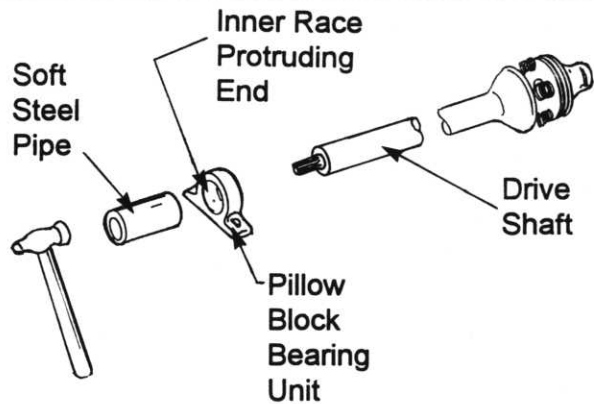
Lockwasher and nut.



Use same bolts on bottom hole.

2. Insert the splined end from the main drive shaft into the pillow block bearing unit, such that the inner race protrusion faces toward the front. Use a piece of soft steel pipe about 1 1/2 x 6" To pound the bearing unit inner race into position (see diagram).

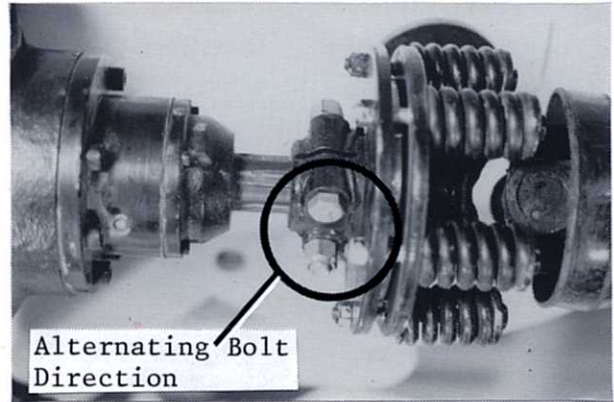
Note: A lockcollar is supplied by the manufacturer but it is not needed in this application



ASSEMBLY

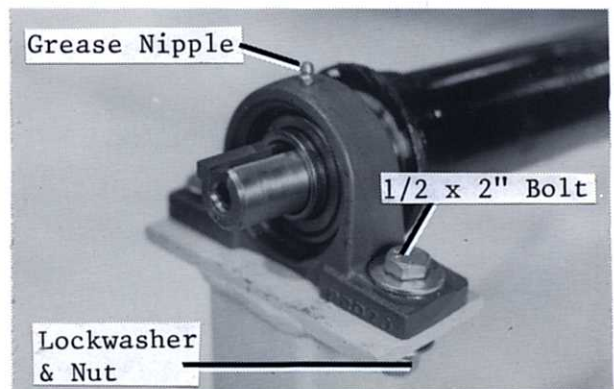
3. Take the main drive shaft with torque limiter and place it onto the splined input shaft of the gear box.

Note: When securing bolts onto torque limiter make sure that they are in reversing directions (see diagram).



4. Place the pillow block bearing onto the bearing support plate and secure using 1/2 x 2" hex bolts, flatwashers, lockwashers and nuts shown. Making sure that it is centred on the support plate. Check that the pillow block support legs are in the vertical position and then tighten the hardware evenly.

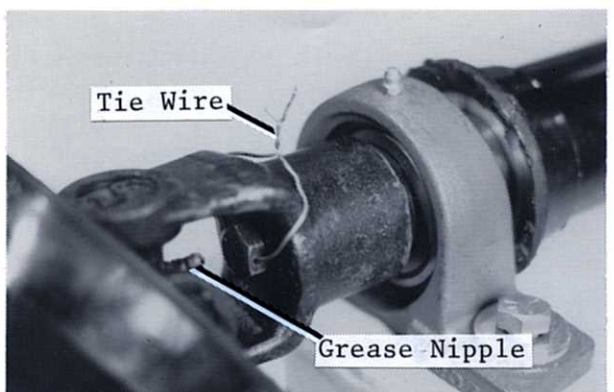
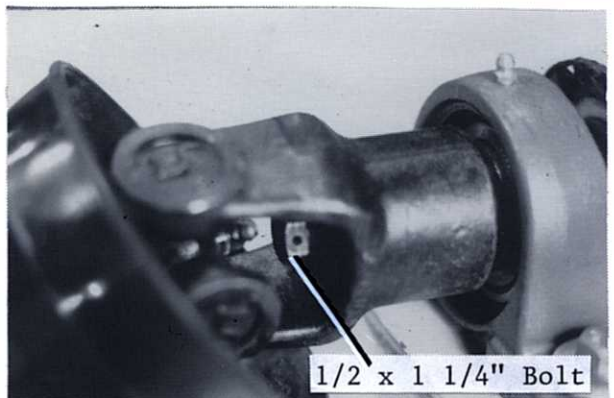
Note: Install the grease fitting into the bearing unit and lubricate with one grease gun stroke.



6. Insert the 3/8 x 5/16 x 1 3/8" key into the splined end of the main PTO shaft. Slide the front PTO slider shaft over splined end. Secure with 1/2 x 1 1/4 bolt and washer supplied.

Note: To install bolt, the 75 degree grease fitting must be removed. Tighten bolt and secure with tie wire by placing it through the bolt hole and wrapping it around the yoke. (see diagram).

Note: Do not forget to reinstall the grease fitting.



2.0 PARTS

This supplementary parts section is to replace the corresponding areas of the following manuals: **Hi-lift Manual: Pages 66, 67, 68, 69, 70, 73**

Semi-Hi Manual: Pages 61, 62, 63, 64, 65, 68

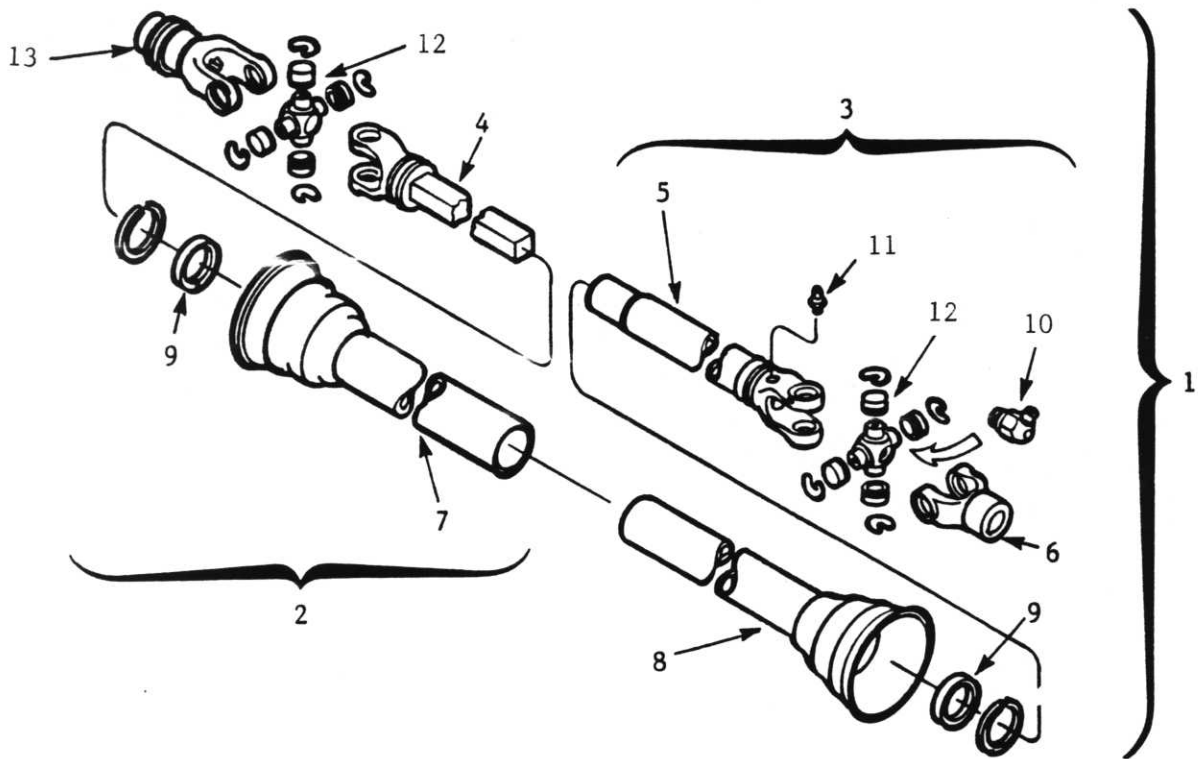
2.1 ORDERING INFORMATION

When ordering replacement parts, be sure to include the machine model number and serial number along with the part number, description and quantity required.

2.2 PARTS TABLE OF CONTENTS

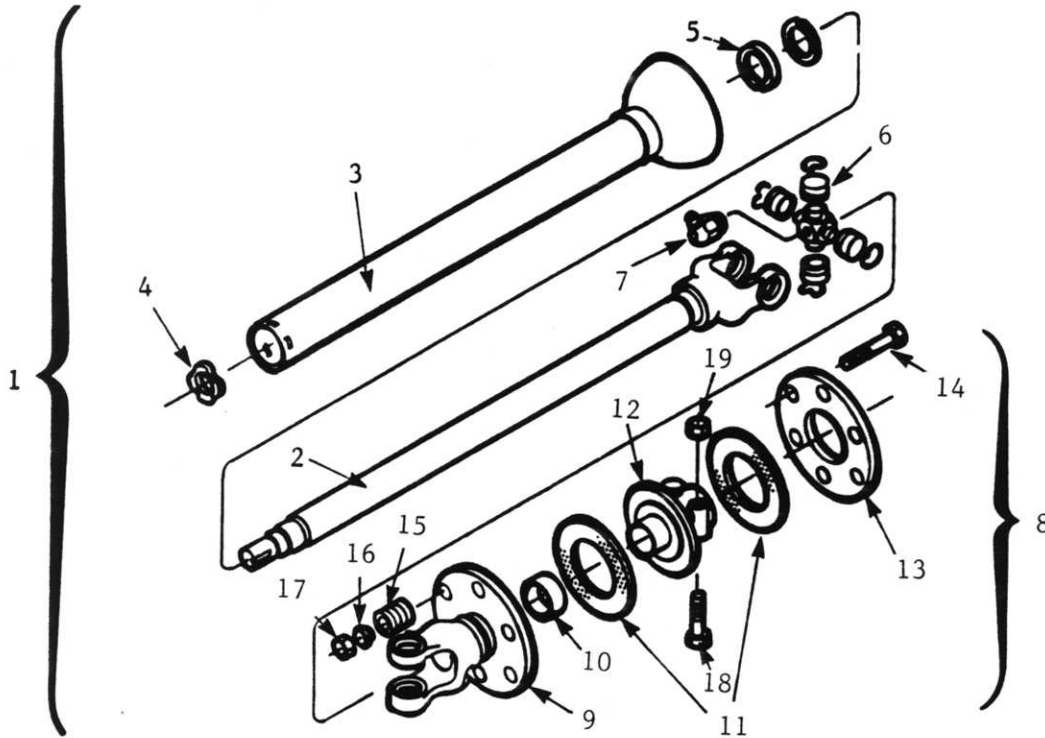
Slider Shaft	6
Drive Shaft	7
Gear Box 6.66:1	8
PTO Dive Layout	10

SLIDER SHAFT c/w QUICK DISCONNECT - WEASLER - 14R



ITEM	PART NO.	DESCRIPTION	QTY.
1	119251	Shaft, Slider 28.1" (overall) - Weasler -14R (6 Spline)	1
2	119252	Shaft, Half - Bar 21.7" - Weasler #93-16781	1
3	119253	Shaft, Half - Tube 20.0" - Weasler #92-16781	1
4	119254	Yoke/Bar 17.38" long - Weasler #99-16781	1
5	119255	Yoke/Tube 16.13" long - Weasler #98-16781	1
6	119257	Yoke 1 5/16" Bar - Weasler #14011-1113	1
7	119258	Shield, Outer PVC - 16" - Weasler #97-16781	1
8	119259	Shield, Inner - PVC - 16" - Weasler #96-16781	2
9	119428	Kit, Repair - Nylon - Weasler #19-11104	2
10	119262	Grease Fitting 1/8 NPT - 75 Degrees	2
11	118335	Grease Fitting 1/4-28 AMNF straight thread	1
12	119118	Kit, Cross and Bearing - Hayes 1240	2
13	119256	Yoke 1 3/8" Q.D. - 6 spline - Weasler	1
14	119264	Kit, Repair - Spg Lock #26-10070	1

DRIVE SHAFT c/w TORQUE LIMITER - WEASLER



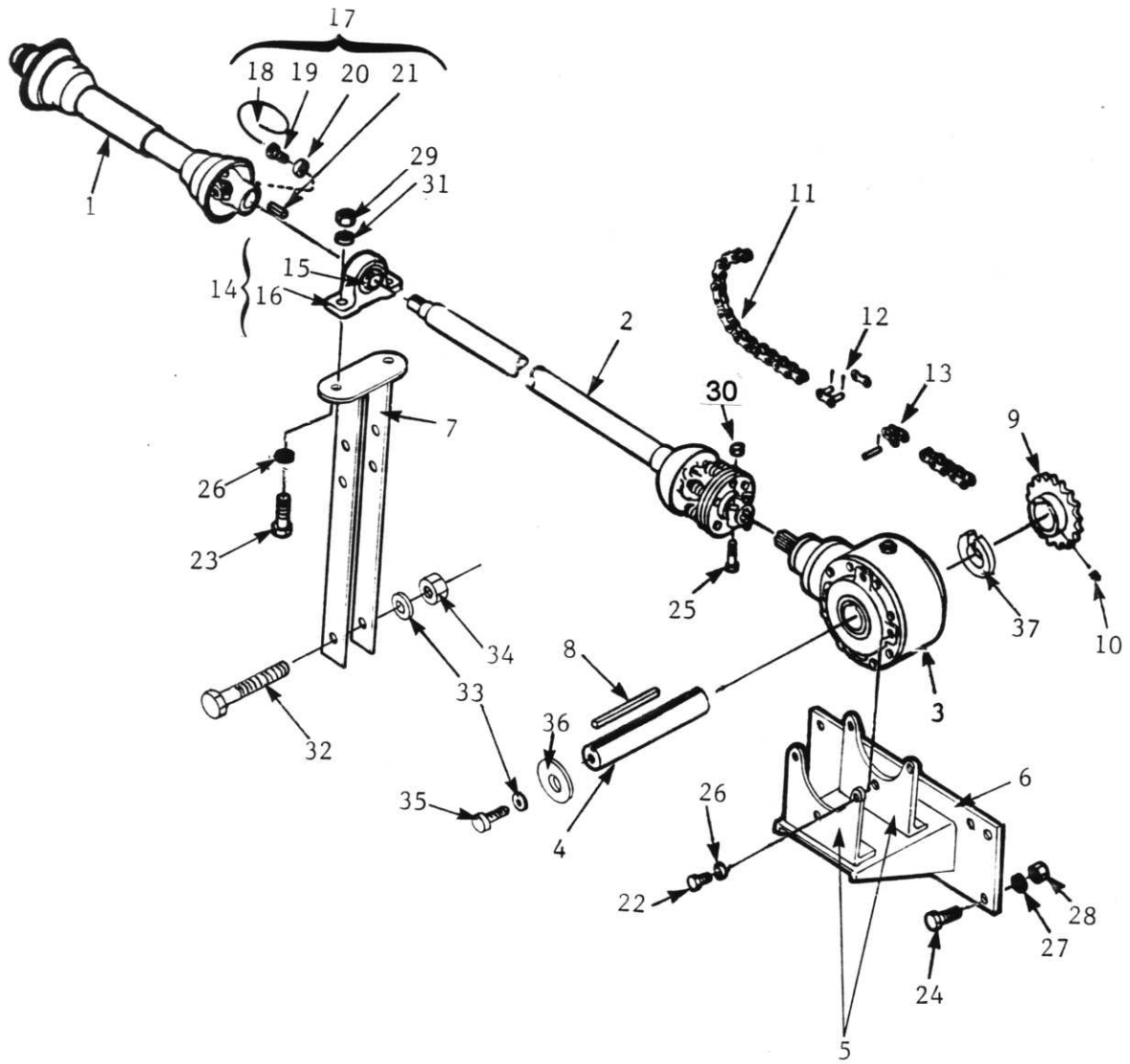
ITEM	PART NO.	DESCRIPTION	QTY.
1	119670	Shaft, Drive 66.75" - Weasler c/w Torque Limiter - 6 Spline Clamp	1
2	119429	Yoke/Shaft 55.6" long - Weasler #98-16780 (not sold separate)	1
3	119427	Shield, Outer Steel - Weasler #96-16780	1
4	119606	Centralizer, Nylon - Weasler	1
5	119428	Kit, Nylon Repair - Weasler #19-11104	1
6	119129	Kit, Cross Bearing - Hayes #1340	1
7	119262	Grease Fitting 1/8 NPT - 75 Degrees	1
8	119402	Torque Limiter Clutch Assembly - Weasler #26-11582	1
		Consists of Items #9 - 19 inclusive:	
9	119278	Yoke/Plate Assembly - Torque Limiter - Weasler #35051-1081	1
10	---	Bushing, Bronze (not sold separately)	1
11	119401	Kit, Repair Friction Disc - Torque Limiter - Weasler #19-44403	
12	119608	Plate, Hub - 6 Spline Bolt Clamp - Weasler #26-10752	1
13	119282	Plate, Pressure - Torque Limiter - Weasler #10-10146	1
14	118139	Bolt, Hex 3/8 x 4" UNC, Gr. 5, Plated	6
15	119283	Spring, Compression - Torque Limiter - Weasler #23-10037	6
16	119284	Guide, Spring Washer - Torque Limiter - Weasler #11-10036	6
17	118417	Nut, Lock 3/8" UNC, Gr. 5, Plated	6
18	118112	Bolt, Hex 1/2 x 3" UNC, Gr. 5, Plated	2
19	118420	Nut, Lock 1/2" UNC, Gr. 5, Plated	2

GEAR BOX 6.66:1 - HUB CITY

ITEM	PART NO.	DESCRIPTION	QTY.
-	119177	Gear Box 6.66:1 - Hub City - M920 - 1 3/8" Splined Input	1
1	119051	Housing, Gear Box 6.66:1 - Hub City	1
2	119052	Cap, Output 6.66:1 - Large - Hub City	1
3	119053	Cap, Output 6.66:1 - Small - Hub City	1
4	119054	Hub, Ring Gear - 2 7/16" ID - Hub City	1
5	119178	Cap, Input 6.66:1 - Hub City - 1 3/8" Splined Input	1
6	119179	Carrier, Pinion Seal - Hub City - 1 3/8" Splined Input	1
7	119180	Gear/Pinion Set 6.66:1 - Hub City - 1 3/8" Splined Input	1
8	119055	Cup, Bearing #42584 - 5.844" OD	2
9	119181	Cup, Bearing #HM801346	1
10	119182	Cup, Bearing (Hub City #8-32-20-58-180)	1
11	119056	Cone, Bearing #42375 - 3.750" ID	2
12	119183	Cone, Bearing #HM801310	1
13	119184	Cone, Bearing #2788A	1
14	--	Capscrew, Socket 3/8 x 1 1/4" UNC	7
15	119070	Setscrew #10 x 3/4" UNF - Allen	4
16	118129	Bolt, Hex 3/8 x 1 1/4" UNC, Gr. 5, Plated	16
--	119186	Kit, Repair #M920 - 1 3/8" Spline Input - Hub City	1
		Consists of:	
17	--	Gasket	10
18	--	Gasket	5
19	--	Gasket	5
20	--	Gasket	1
21	119061	Seal, Dust - CR #36361 - 3.625" ID	2
22	119185	Seal, Dust (Hub City #8-74-21-25-017)	1
23	--	Nut, Lock 1 1/2 - 16 Thread (Hub City #8-47-16-14-041)	1
24	--	Rivet 3/8 x 1 1/4" (Hub City #8-47-17-00-002)	12
25	119021	Reducer 1/8 NPT(FM) x 1/2 NPT(M)	1
26	119020	Vent, Pressure Relief - 1/8 NPT(M)	1
27	119016	Plug, Port 1/2 NPT(M) - Allen	1
28	119071	Plug, Port 1/4 NPT(M) - Allen	2
29	--	Plug, Port 1/8 NPT(M) - Allen	2

Note: Item #7 is a matched Gear and Pinion Set
and cannot be purchased separately.

PTO DRIVE LAYOUT



PTO DRIVE LAYOUT

ITEM	PART NO.	DESCRIPTION	QTY.
1	119251	Shaft, Slider 28.1" (overall) - Weasler - 14R (6 spline)	1
2	119670	Shaft, Drive 66.75" - Weasler c/w Torque Limiter - 6 Spline Clamp	1
3	119177	Gear Box 6.66:1 - Hub City - M920 - 1 3/8" Splined Input	1
4	229100	Shaft, Gear Box 2 7/16" OD x 10 1/2" Long	1
5	229050	Gear Box Support Plate	2
6	228002	Gear Box Support Bracket	1
7	230000	Bracket, Drive Line Support	1
8	119076	Key - 5/8 x 5/8 x 10 1/2"	1
9	122004	20 Tooth Out-Put Sprocket - For 540 RPM PTO	1
	122011	16 Tooth Out-Put Sprocket - For 1000 RPM PTO	
10	118256	5/8 x 5/8" Allen Set Screw	1
11	120009	Chain, Roller #80 - 83 Links (540 PTO)	1
	120012	Chain, Roller #80 - 79 Links (1000PTO)	
12	120002	Link, Connector #80 - Std.	1
13	120003	Link, Offset #80 - Std.	1
14	117023	Bearing Unit, Pillow Block 1 3/8" c/w Locking Collar (not required)	1
15	117090	Insert, Bearing 1 3/8"	1
16	117010	Casting, Pillow Block 1 3/8" Bearing	1
17	119340	Bag, Hardware (supplied by Weasler)	1
18	--	Tie Wire	1
19	--	Bolt, Hex - Drilled Head 1/2 x 1 1/4" UNF	1
20	--	Washer, Flat 1 1/2 OD x 33/64 ID x 1/4" Thick	1
21	--	Key 3/8 x 5/16 x 1 3/8" Long	1
22	118009	Bolt, Hex 1/2 x 1 1/4" UNC, Gr. 5, Plated	6
23	118014	Bolt, Hex 1/2 x 2" UNC, Gr. 5, Plated	2
24	118015	Bolt, Hex 3/4 x 4" UNC, Gr. 5, Plated	4
25	118112	Bolt, Hex 1/2 x 3" UNC, Gr. 5, Plated	2
26	118504	Washer, Lock 1/2" Plated	8
27	118509	Washer, Lock 3/4" Plated	4
28	118410	Nut, Hex 3/4" UNC, GR. 5, Plated	4
29	118405	Nut, Hex 1/2" UNC, Gr. 5, Plated	2
30	118420	Nut, Lock 1/2" UNC, Gr. 5, Plated	2
31	118512	Washer, Flat 1/2" Plated	2
32	118035	Bolt, Hex 5/8 x 4" UNC, Gr. 5, Plated	2
33	118508	Washer, Lock 5/8" Plated	3
34	118407	Nut, Hex 5/8" UNC, Gr. 5, Plated	2
35	118023	Bolt, Hex 5/8 x 1 1/2" UNC, Gr. 5, Plated	1
36	229030	Washer, Gear Box Shaft End	1
37	229104	Spacer, Sprocket 5/8 x 2 1/2" ID	1

NOTES

Degelman

WE PROVIDE

- **complete operating instructions.**
- **complete repair parts lists.**
- **written warranty protection.**
- **ten year parts availability.**

———— Quality in Equipment ————

BEST IN THE FIELD WHERE IT COUNTS . . .

DEGELMAN INDUSTRIES LTD.

272 INDUSTRIAL DRIVE

REGINA, SASK.,

CANADA S4P 3B1

PHONE (306) 543-4447

FAX (306) 543-2140