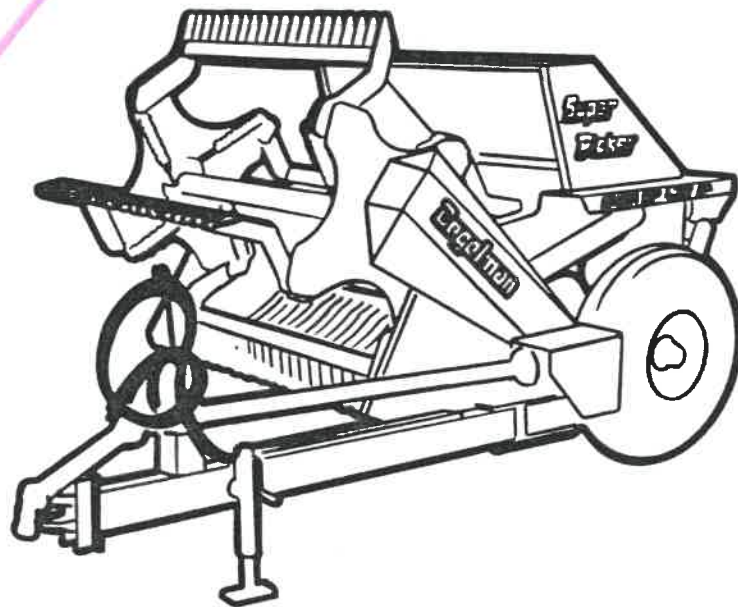


DeGelman

"BEST IN THE FIELD - - - WHERE IT COUNTS"

Super Picker

RP 6700



PARTS MANUAL

142254

JAN 85

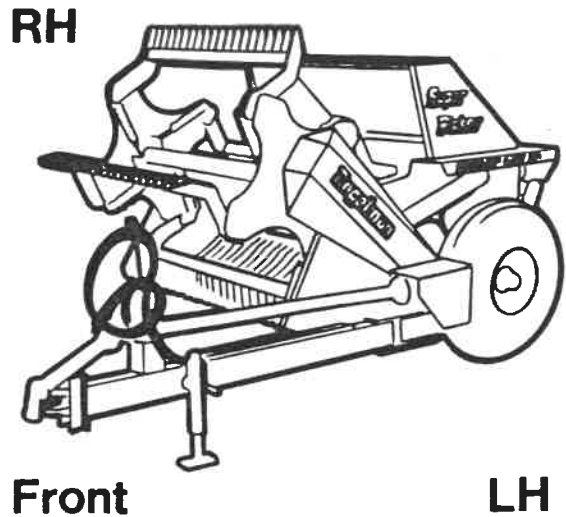
farm implements

DEGELMAN INDUSTRIES LTD. P.O. BOX 830 REGINA, SASK. CANADA

GENERAL INFORMATION

When ordering replacement parts be sure to include the machine SERIAL NUMBER (located on the rear right hand corner of the frame) along with the PART NUMBER and DESCRIPTION of components required.

All measurements are in IMPERIAL UNITS (inches - in; feet - ft.) unless otherwise stated.



Because we are constantly striving to improve our products we reserve the right to incorporate any changes, related to design, material and specifications at any time, without notice or obligation.



DEGELMAN INDUSTRIES LTD.

Copyright © 1984 1st Printing AUG 84 - Revised JAN 85

Printed in CANADA

CONTENTS

BASIC COMPONENTS

Frame Components	2
Hopper Box	3
Grill	4
Reel Shaft and Paddles	5
Hitch Pole	6
Hub and Spindle	7
Wheel Unit	8

DRIVE COMPONENTS

Chain Tightener and Spring	9
Chain	10
Power Train Components	11
Slider Shaft c/w Quick Disconnect - Weasler	12
Drive Shaft c/w Torque Limiter - Weasler	13
Gear Box - Curtis	14
Bearing Units	15

HYDRAULICS

Hydraulic Layout	16
Hydraulic Cylinder 3 x 8 in. Stroke - DIL	18
Hydraulic Cylinder 3 x 31 in. Stroke - DIL	19
Hydraulics - Hose Clips, Hose Holder, Hose Shields	20

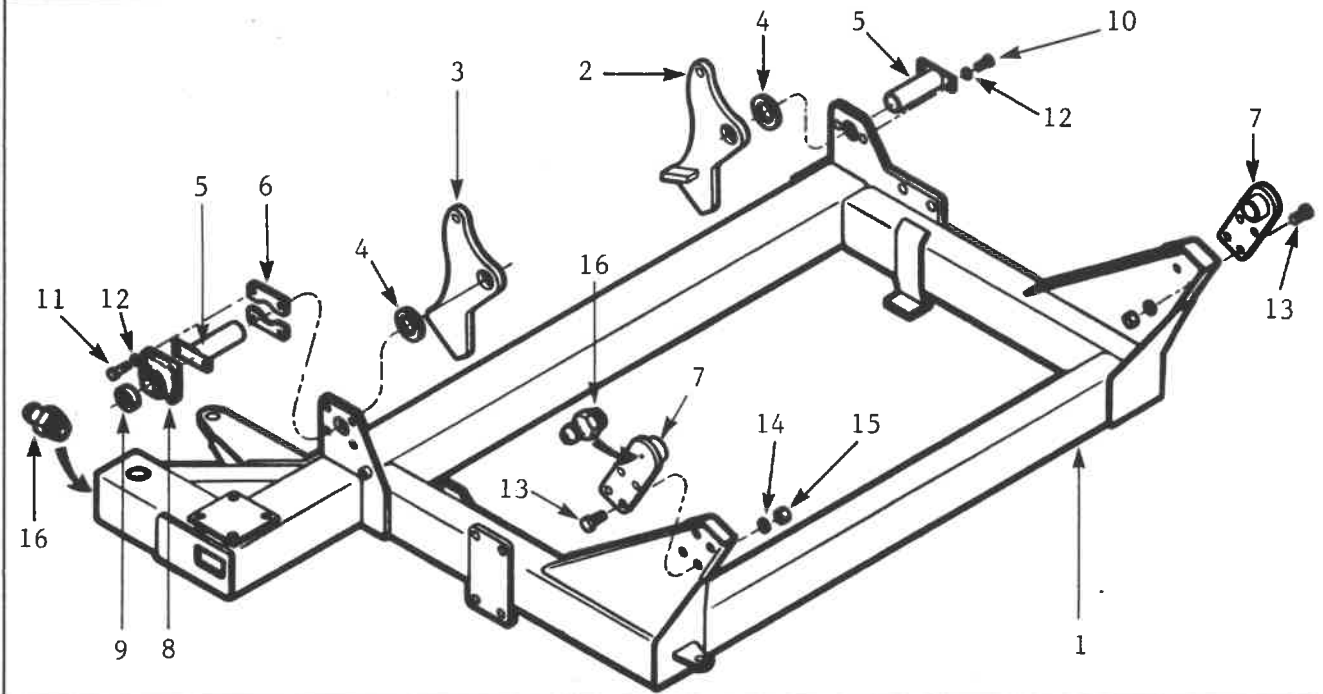
SHIELDS and GUARDS

Safety Shields	21
Rock Guard Unit	22

MISCELLANEOUS

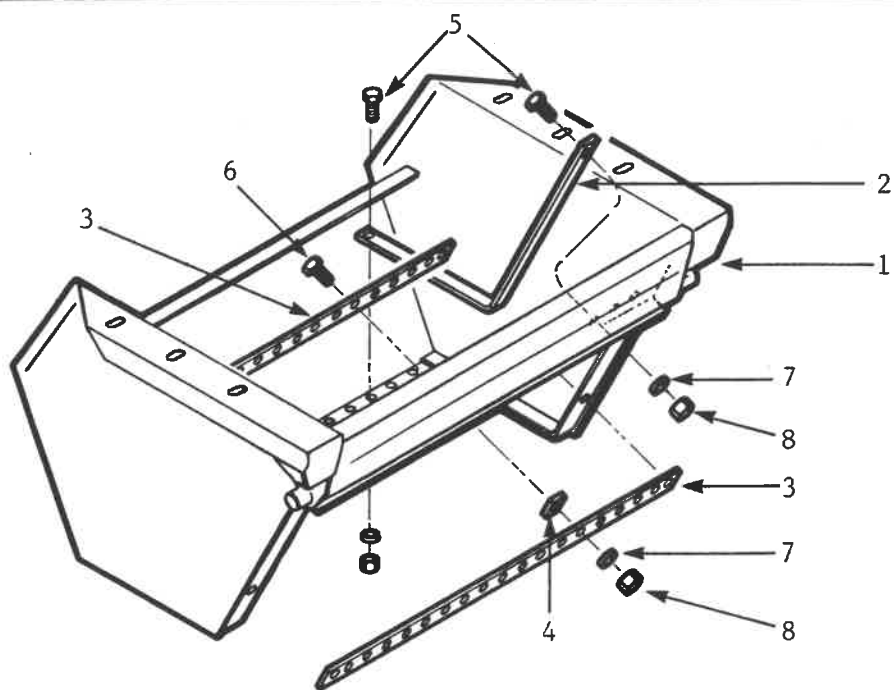
Publications	23
Decals	24

FRAME COMPONENTS



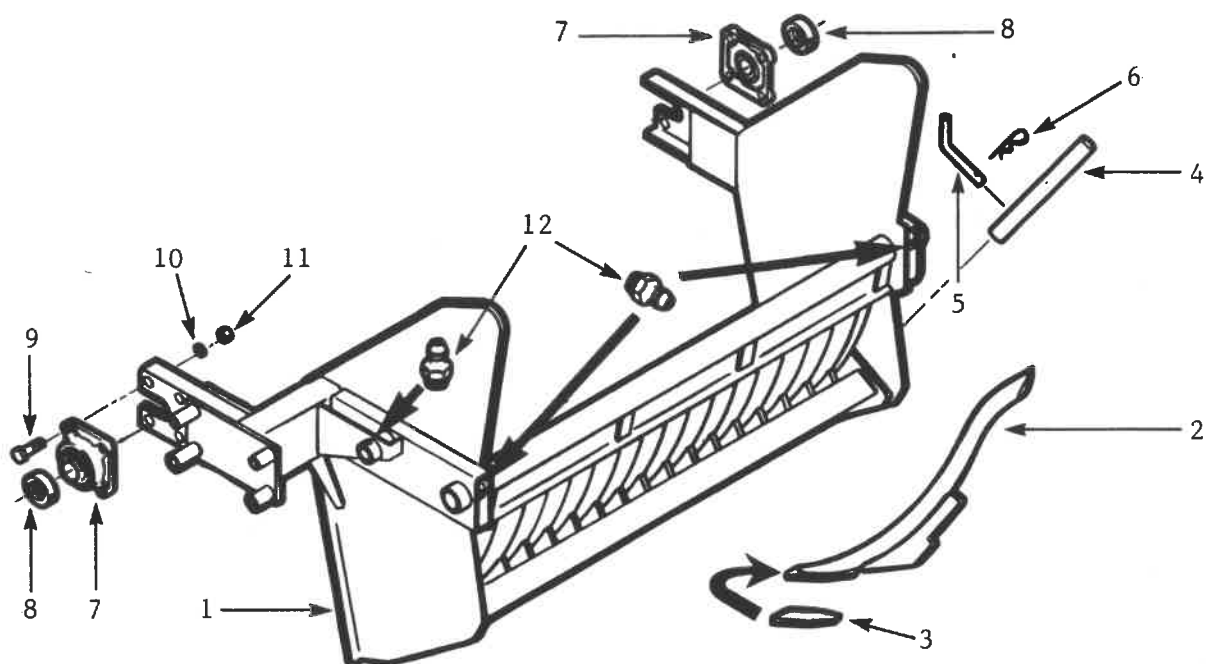
ITEM	PART NO.	DESCRIPTION	QTY
1	240100	Frame Assembly - RP/S2	1
2	240270	Flotation Assembly - RH - RP/S2	1
3	240268	Flotation Assembly - LH - RP/S2	1
4	240273	Washer, Flat - 90 ID x 140 OD x 6 mm thick	2
5	240087	Pin Assembly 72 dia x 175 mm long (effective)	2
6	240081	Plate, Spacer-Bearing - RP/S2	2
7	240098	Pivot, Box-Assembly - RP/S2	2
8	117089	Bearing Unit, Flange - 4 Hole - 1 3/8 in. (complete)	1
9	117024	Collar, Lock - 1 3/8 in. Bearing	1
10	118009	Bolt, Hex 1/2 x 1 1/4 in. UNC, GR 2, Plated	2
11	118014	Bolt, Hex 1/2 x 2 in. UNC, GR 5, Plated	4
12	118504	Washer, Lock 1/2 in., Plated	6
13	118026	Bolt, Hex 5/8 x 2 in. UNC, GR 5, Plated	8
14	118508	Washer, Lock 5/8 in., Plated	8
15	118407	Nut, Hex 5/8 in. UNC, GR 5, Plated	8
16	118335	Grease Fitting 1/4-28 AMNF Thread-Straight	A/R

HOPPER BOX



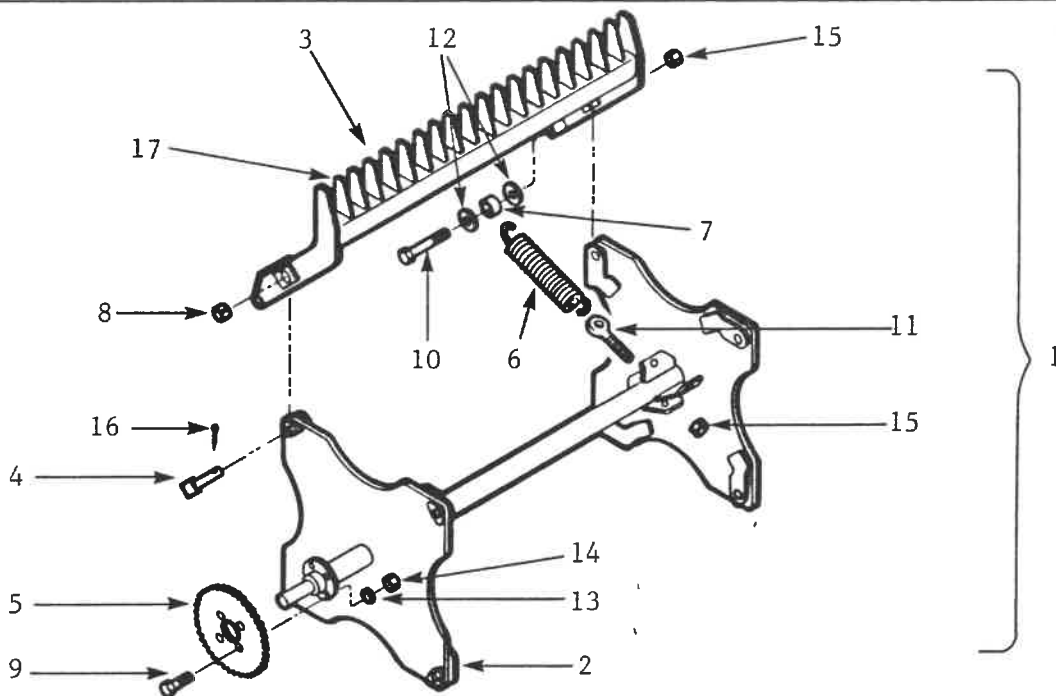
ITEM	PART NO.	DESCRIPTION	QTY
1	240140	Box, Hopper - RP/S2	1
2	240252	Strap, Box - RP/S2 - 9 x 50 x 1478 mm long	16
3	240251	Bar, Bolt - 19 Holes	2
4	240156	Bar, Spacer - 1 Hole - 9 x 42 x 50 mm long	17
5	118011	Bolt, Hex 1/2 x 1 1/2 in. UNC, GR 5, Plated	32
6	118014	Bolt, Hex 1/2 x 2 in. UNC, GR 5, Plated	19
7	118504	Washer, Lock 1/2 in., Plated	51
8	118405	Nut, Hex 1/2 in. UNC, GR 5, Plated	51

GRILL



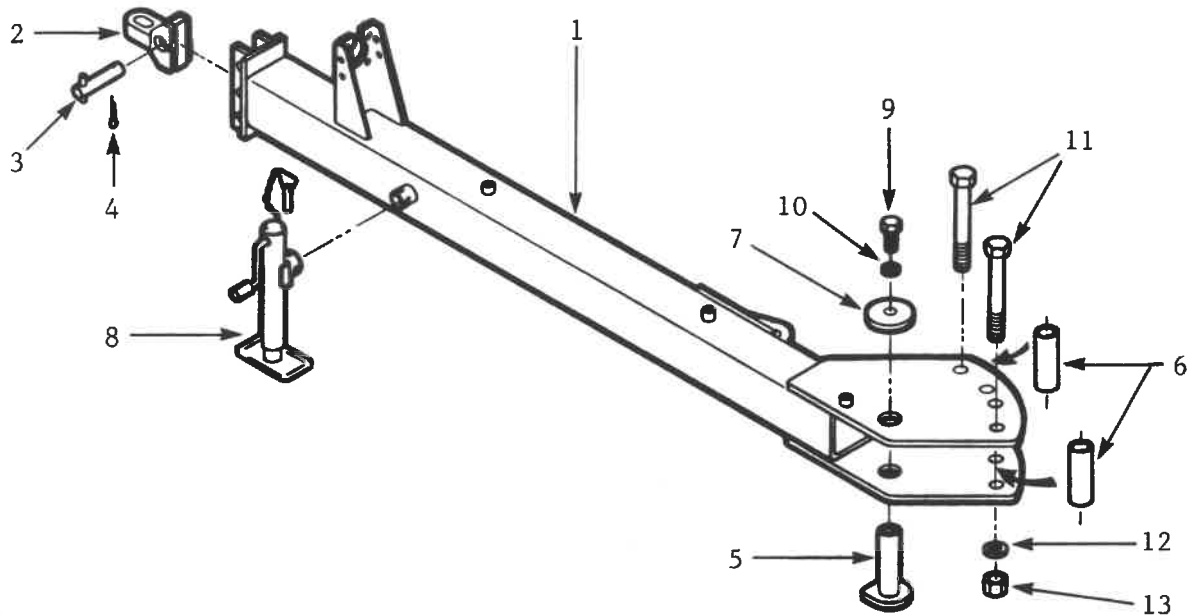
ITEM	PART NO.	DESCRIPTION	QTY
1	240160	Grill Assembly - RP/S2	1
2	240182	Tooth Assembly - Grill - RP/S2	A/R
3	240188	Plate, Wear - Grill Tooth	A/R
4	240278	Shaft, Transport Lock - RP/S2 - red	1
5	240277	Pin - 20 x 54 mm long (effective) - red	1
6	118830	Pin, Hair 4.5 x 83 mm - Plated	1
7	117006	Bearing Unit, Flange - 4 Hole - 2 7/16 in. (complete)	2
8	117022	Collar, Lock 2 7/16 in. Bearing	2
9	118026	Bolt, Hex - 5/8 x 2 in. UNC, GR 5, Plated	8
10	118508	Washer, Lock 5/8 in. Plated	8
11	118407	Nut, Hex 5/8 in. UNC, GR 5, Plated	8
12	118335	Grease Fitting 1/4 - 28 AMNF Thread-Straight	3

REEL SHAFT and PADDLES



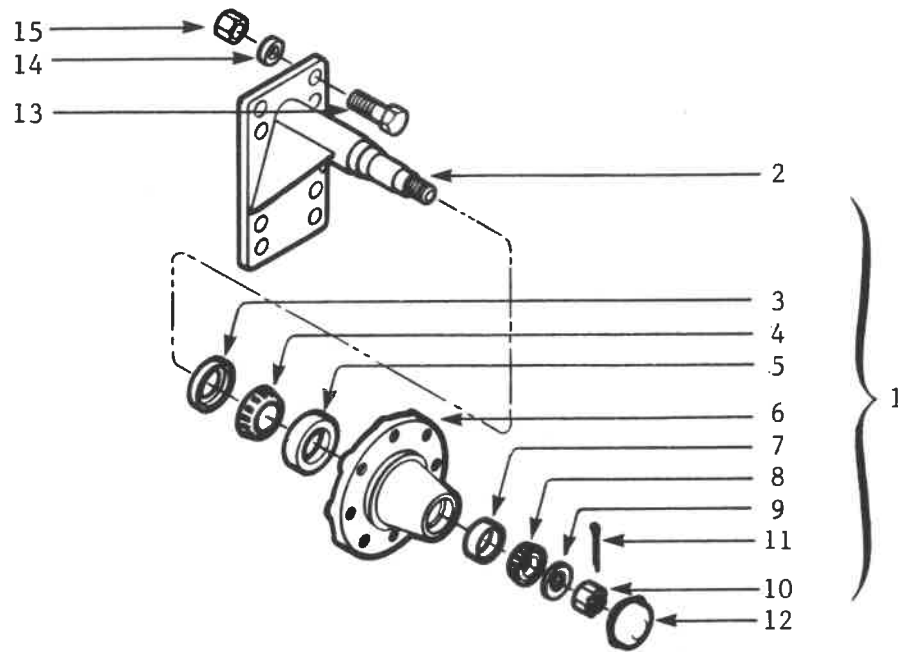
ITEM	PART NO.	DESCRIPTION	QTY
1	240071	Shaft/Paddle Assembly - RP/S2	1
2	240189	Shaft, Reel - Assembly - RP/S2	1
3	240210	Paddle Assembly - RP/S2	4
4	118801	Pin - Square Head - 1/2 x 2 3/4 in. long (effective)	8
5	240259	Sprocket 80A72 - 4 Hole - RP/S2	1
6	143018	Spring, Tension - 14 7/8 in. x 25 3/4 Coils	8
7	240092	Bushing 31.8 OD x 5.6 Wall x 15 mm long	8
8	117092	Bushing 1 1/4 OD x 1/8 Wall x 1 3/8 in. long - Spring Steel	8
9	118047	Bolt, Hex 3/4 x 2 1/2 in. UNC, GR 5, Plated	4
10	118061	Bolt, Hex 3/4 x 5 in. UNC, GR 5, Plated	8
11	118241	Bolt, Eye 3/4 x 5 1/4 in. UNC, GR 5, Plated	8
12	118516	Washer, Flat 3/4 in. Plated	16
13	118509	Washer, Lock 3/4 in. Plated	4
14	118410	Nut, Hex 3/4 in. UNC, GR 5, Plated	4
15	118422	Nut, Lock 3/4 in. UNC, GR 5, Plated	16
16	118838	Pin, Cotter 1/4 x 1 1/2 in. long	8
17	211012	Tooth, Paddle - Hard Surfaced	A/R

HITCH POLE



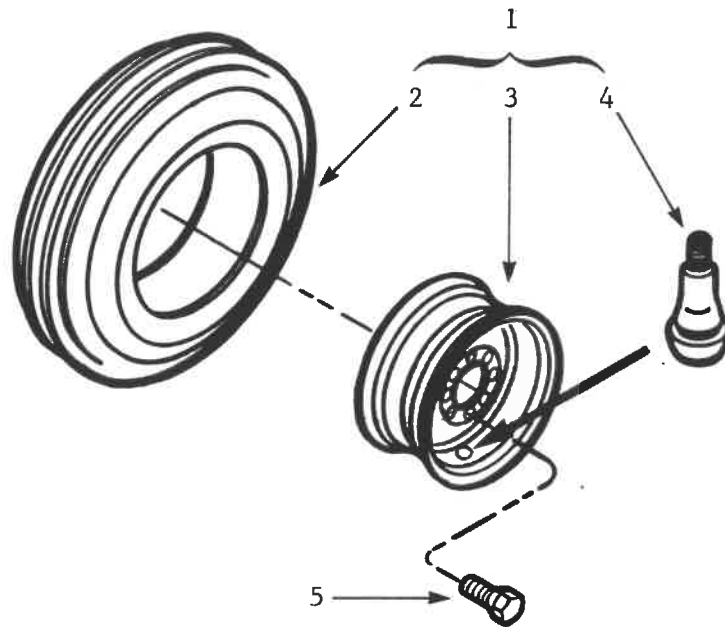
ITEM	PART NO.	DESCRIPTION	QTY
1	240130	Pole, Hitch - RP/S2 c/w Hitch Lug	1
2	240208	Lug, Hitch - Assembly	1
3	118804	Pin Assembly 1 x 4 3/8 in. long (effective)	1
4	118838	Pin, Cotter 1/4 x 1 1/2 in. long	1
5	240137	Pin Assembly - 52 x 180 mm long (effective)	1
6	240094	Bushing - 39.7 OD x 6.4 Wall x 154 mm long	2
7	229030	Washer, Flat 21/32 ID x 4 OD x 3/8 in. thick	1
8	132005	Jack, Side Wind SWS-150-DTSF	1
9	118024	Bolt, Hex 5/8 x 1 1/2 in. UNC, GR 5, Plated	1
10	118508	Washer, Lock 5/8 in. Plated	1
11	118113	Bolt, Hex 1 x 9 in. UNC, GR 5, Plated	2
12	118510	Washer, Lock 1 in. Plated	2
13	118412	Nut, Hex 1 in. UNC, GR 5, Plated	2

HUB and SPINDLE



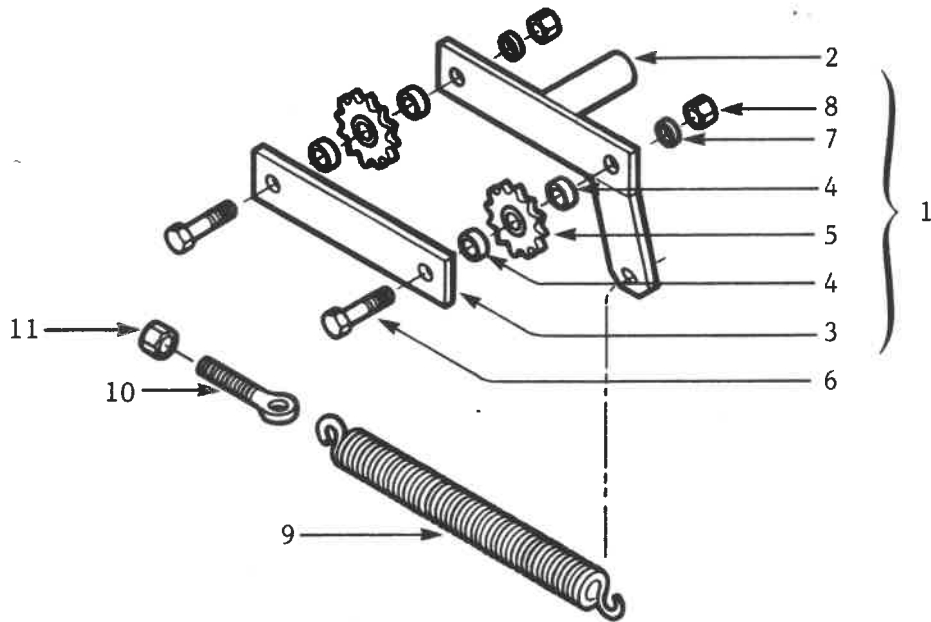
ITEM	PART NO.	DESCRIPTION	QTY
1	240241	Hub/Spindle Assembly - H812 - RP/S2	1
2	240249	Axle Assembly - RP/S2 - c/w Castellated Nut	1
3	131184	Seal, Hub	1
4	131182	Cone, Bearing - Inner	1
5	131180	Cup, Bearing - Inner	1
6	131094	Casting, Hub - c/w Cups	1
7	131071	Cup, Bearing - Outer	1
8	131183	Cone, Bearing - Outer	1
9	131020	Washer, Flat 1 in. SAE	1
10	118423	Nut, Castellated 1-14 UNS, GR 5, Plated	1
11	118835	Pin, Cotter 3/16 x 1 1/2 in. long	1
12	131093	Cap, Dust	1
13	118047	Bolt, Hex 3/4 x 2 1/2 in. UNC, GR 5, Plated	4
14	118509	Washer, Lock 3/4 in. Plated	4
15	118410	Nut, Hex 3/4 in. UNC, GR 5, Plated	4

WHEEL UNIT



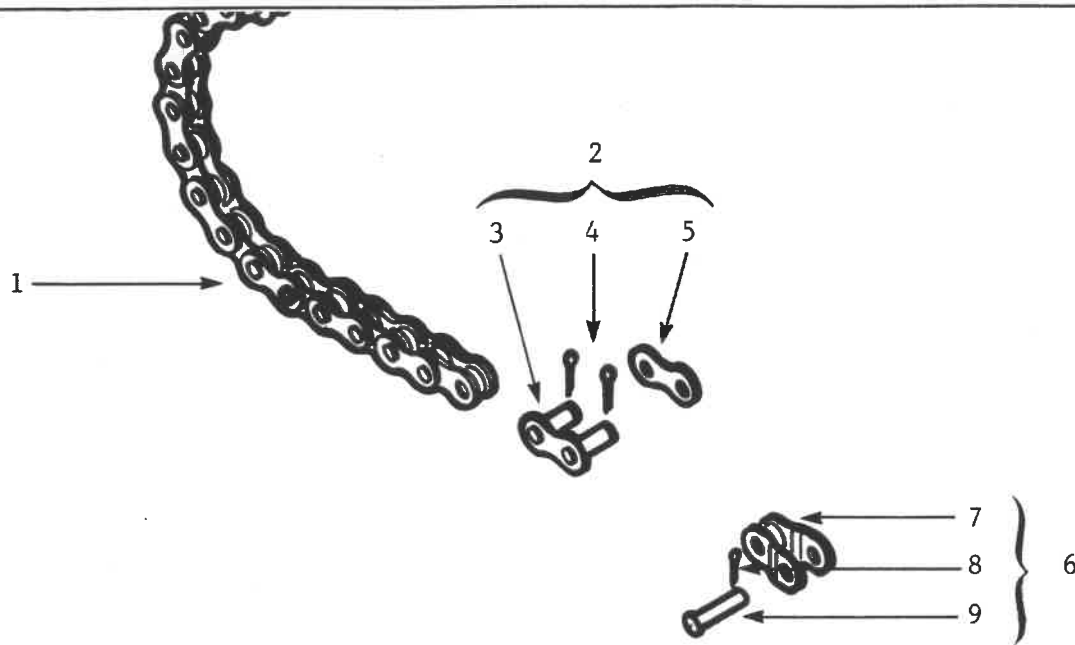
ITEM	PART NO.	DESCRIPTION	QTY
1	240242	Wheel Assembly - 16.5L x 16.1 - 6 Ply	A/R
2	127011	Tire, Tubeless - 16.5L x 16.1 - 6 Ply	1
3	131000	Rim, Wheel - W11C - 16.1 - 8 Bolt	1
4	127006	TR415 Valve Stem	1
5	118313	Bolt, Wheel 9/16 x 1 1/16 in. UNF, GR 5 Plated	8

CHAIN TIGHTENER and SPRING



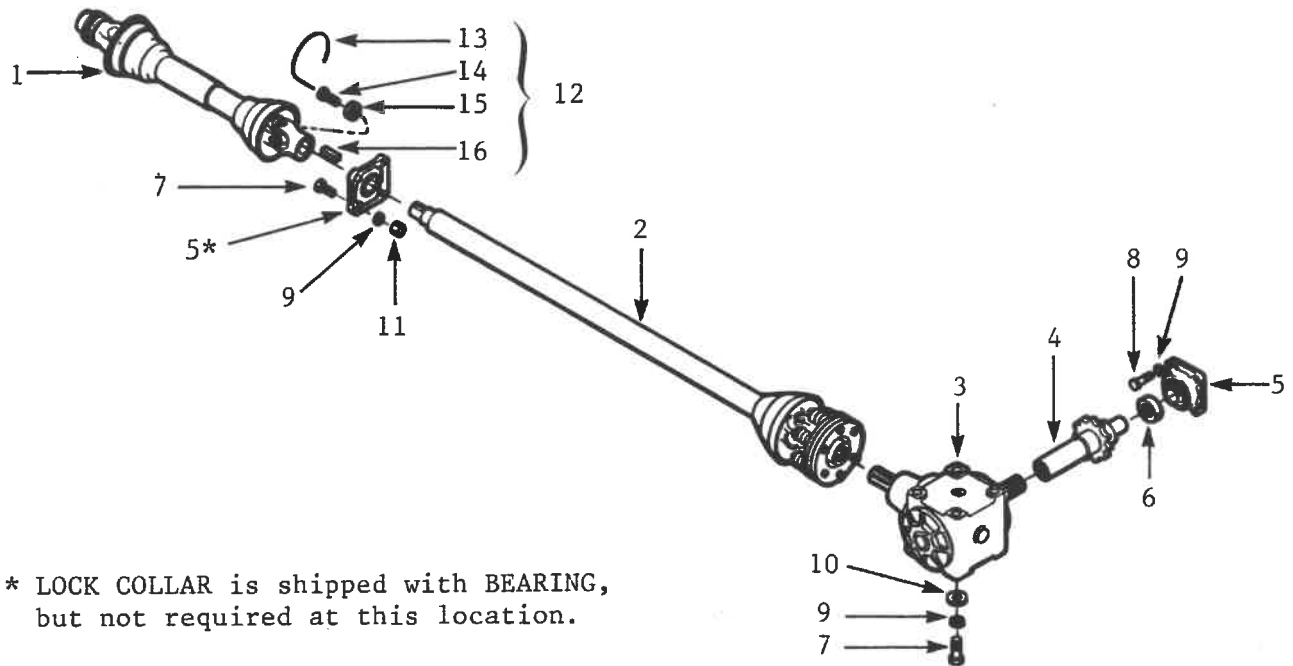
ITEM	PART NO.	DESCRIPTION	QTY
1	240220	Chain Tightener Assembly - RP/S2	1
2	240223	Arm, Chain Tightener - RP/S2	1
3	240221	Bar, Bolt - 2 Hole - 204 mm Hole Centres	1
4	222041	Bushing - 1.050 OD x .154 Wall x 9/16 in. long	4
5	122001	Sprocket, Idler 80A12 c/w Bearing	2
6	118053	Bolt, Hex 3/4 x 3 1/2 in. UNC, GR 5, Plated	2
7	118509	Washer, Lock 3/4 in. Plated	2
8	118410	Nut, Hex 3/4 in. UNC, GR 5, Plated	2
9	143003	Spring, Tension - 49 Coil	1
10	118240	Bolt, Eye 5/8 x 5 1/4 in. UNC, GR 5, Plated	1
11	118448	Nut, Lock 5/8 in. UNC, GR 5, Plated	1

CHAIN



ITEM	PART NO.	DESCRIPTION	QTY
1	120022	Chain, Roller #80 - 121 Link - Heavy Duty	1
2	120021	Link, Connector #80 - HD - Kit	1
3	--	Link, Connector	1
4	--	Pin, Cotter	2
5	--	Plate, Link	1
6	120020	Link, Offset #80 - HD - Kit	A/R
7	--	Link, Offset	1
8	--	Pin, Cotter	1
9	--	Pin	1

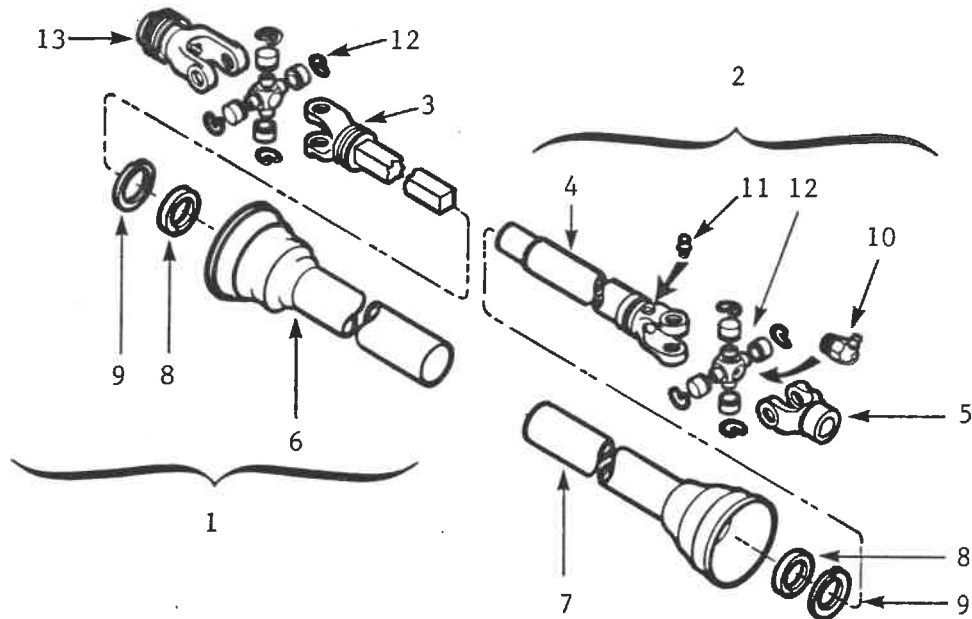
POWER TRAIN COMPONENTS



* LOCK COLLAR is shipped with BEARING,
but not required at this location.

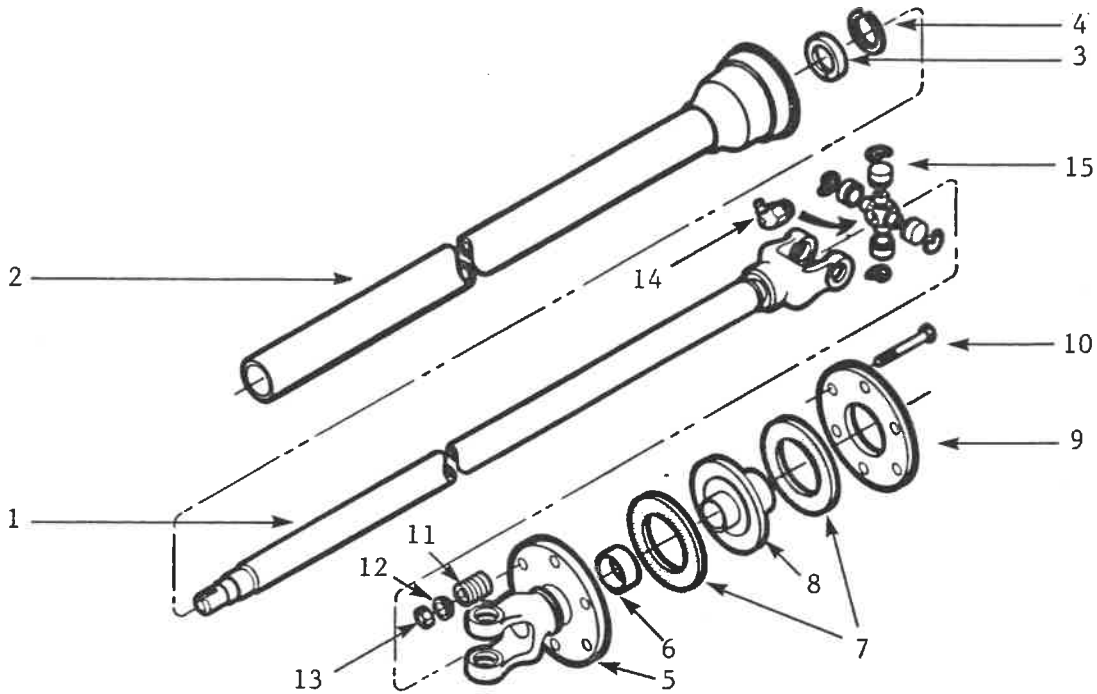
ITEM	PART NO.	DESCRIPTION	QTY
1	119251	Shaft, Slider 28 1/16 in. Weasler - Complete	1
2	119275	Shaft, Drive 85 1/8 in. c/w Torque Limiter - Weasler - Complete	1
3	119083	Gear Box - 2:1 - Curtis - Type "F"	1
4	240266	Shaft, Drive - Assembly - RP/S2	1
5	117089	Bearing Unit, Flange - 4 Hole 1 3/8 in. c/w Lock Collar	2
6	117024	Collar, Lock - 1 3/8 in. Bearing	1
7	118011	Bolt, Hex 1/2 x 1 1/2 in. UNC, GR 5, Plated	A/R
8	118014	Bolt, Hex 1/2 x 2 in. UNC, GR 5, Plated	A/R
9	118504	Washer, Lock 1/2 in. Plated	A/R
10	118512	Washer, Flat 1/2 in. Plated	A/R
11	118405	Nut, Hex 1/2 in. UNC, GR 5, Plated	A/R
12	119340	Bag, Hardware (supplied by Weasler)	1
13	--	Tie Wire	1
14	--	Bolt, Hex - Drilled Head - 1/2 x 1 1/4 in. UNF, GR 5, Plated	1
15	--	Washer, Flat 1/2 ID x 1 9/16 OD x 3/16 in. thick	1
16	--	Key 3/8 x 5/16 x 1 3/8 in. long	1

SLIDER SHAFT c/w QUICK DISCONNECT - WEASLER



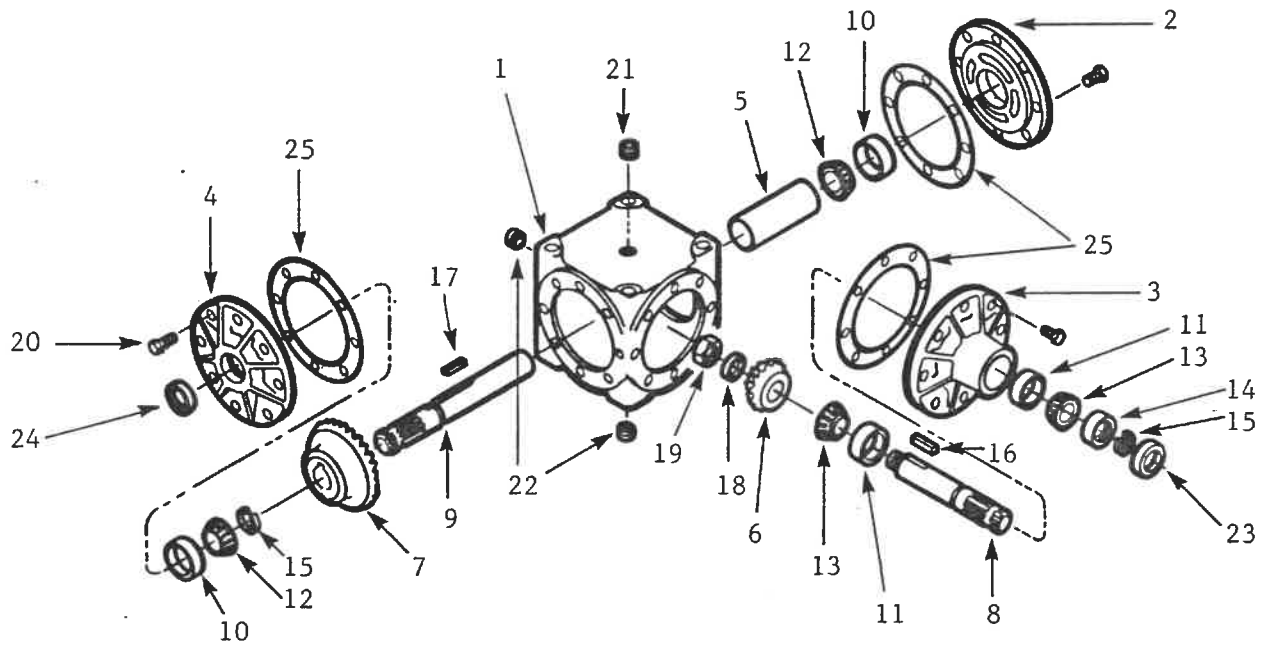
ITEM	PART NO.	DESCRIPTION	QTY
	119251	Shaft, Slider 28 1/16 in. - Weasler - Complete	1
1	119252	Shaft, Half - Bar/Yoke/Shield	1
2	119253	Shaft, Half - Tube/Yoke/Shield	1
3	119254	Bar/Yoke Assembly	1
4	119255	Tube/Yoke Assembly	1
5	119257	Yoke 1 15/16 to 1 9/16 in. Bore	1
6	119258	Shield, Plastic - 3 in. Tube c/w #8 and #9	1
7	119259	Shield, Plastic - 2 3/4 in. Tube c/w #8 and #9	1
8	119260	Bearing, Nylon - #4N20	2
9	119261	Ring, Retainer - #2N26	2
10	119262	Grease Fitting - 1/8 NPT - 75°	2
11	118335	Grease Fitting - 1/4-28 AMNF Thread-Straight	1
12	119263	Kit, Cross and Bearing - 14 NW	2
13	119256	Yoke 1 3/8 in. - 6 Spline - Weasler - Quick Lock	1

DRIVE SHAFT c/w TORQUE LIMITER - WEASLER



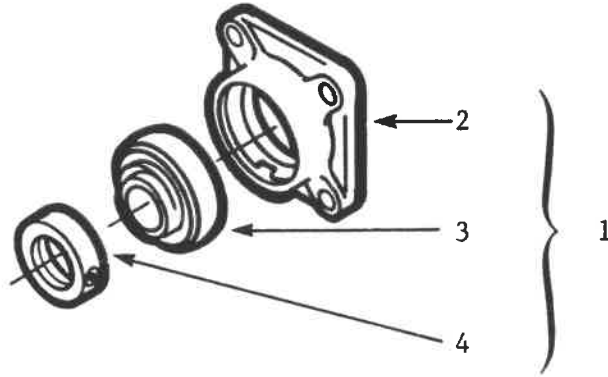
ITEM	PART NO.	DESCRIPTION	QTY
	119275	Shaft, Drive - 85 1/8 in. c/w Torque Limiter - Weasler - Complete	1
1	119276	Shaft/Yoke Assembly	1
2	119277	Shield, Plastic 2 3/4 x 76 1/2 in. c/w #3 and #4	1
3	119260	Bearing, Nylon #4N20	1
4	119261	Ring, Retainer #2N26	1
5	119278	Plate/Yoke Assembly c/w Bushing	1
6	--	Bushing (not sold separate)	1
7	119280	Disc, Friction - #11F98	2
8	119281	Hub/Plate Assembly	1
9	119282	Plate, Pressure	1
10	118139	Bolt, Hex 3/8 x 4 in. UNC, GR 5, Plated	6
11	119283	Spring, Compression - #23A19	6
12	119284	Keeper, Spring - #11W138	6
13	118417	Nut, Lock 3/8 in. UNC, GR 5, Plated	6
14	119262	Grease Fitting - 1/8 NPT - 75°	1
15	119285	Kit, Cross and Bearing - 35 NW	1

GEAR BOX - 2:1 - CURTIS



ITEM	PART NO.	DESCRIPTION	QTY
	119083	Gear Box - 2:1 - Curtis - Type "F"	1
1	119085	Housing, Gear Box - Curtis	1
2	119172	Cap, Closed End - Gear Box - Curtis	1
3	119098	Cap, Input	1
4	119086	Cap, Output	1
5	119173	Spacer	1
6	119095	Gear, Pinion	1
7	119091	Gear, Crown	1
8	119167	Shaft, Input	1
9	119089	Shaft, Output	1
10	119057	Cup, Bearing (Output)	2
11	119096	Cup, Bearing (Input)	2
12	119088	Cone, Bearing (Output)	2
13	119097	Cone, Bearing (Input)	2
14	119099	Collar	1
* 15	--	Ring, Retaining	2
* 16	119028	Key 5/16 x 5/16 x 1 1/2 in. (also sold separate)	1
* 17	119031	Key 5/16 x 5/16 x 1 1/4 in. (also sold separate)	1
* 18	--	Washer	1
* 19	--	Nut, Lock	1
20	118085	Bolt, Hex 3/8 x 1 1/4 in. UNC, GR 5, Plated	24
* 21	119100	Vent, Pressure Relief - 1/2 NPT(M) (also separate)	1
22	119016	Pipe Plug - Solid - 1/2 NPT	2
* 23	119166	Seal, Input (also sold separate)	1
* 24	119090	Seal, Output (also sold separate)	1
* 25	{ --	Gasket (.015 in.)	5
	{ --	Gasket (.005 in.)	
	{ --	Gasket (.003 in.)	
	119175	Kit, Repair #514 Gearbox - Curtis (items marked *)	1

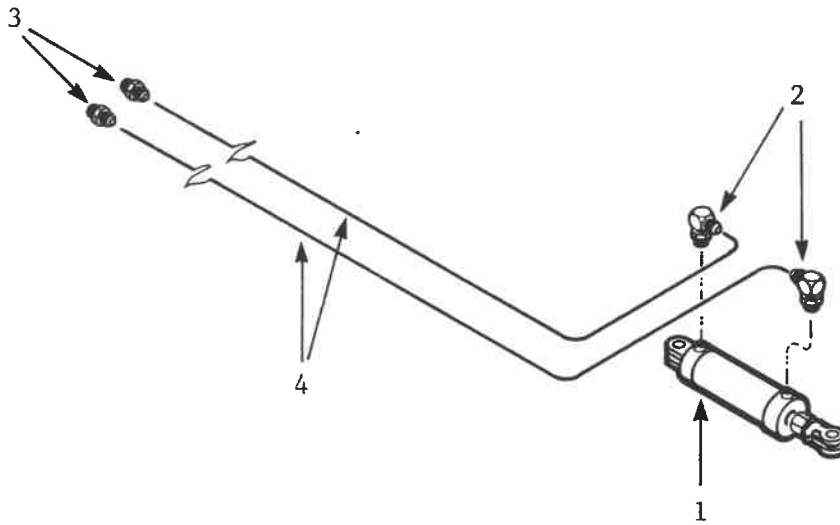
BEARING UNITS



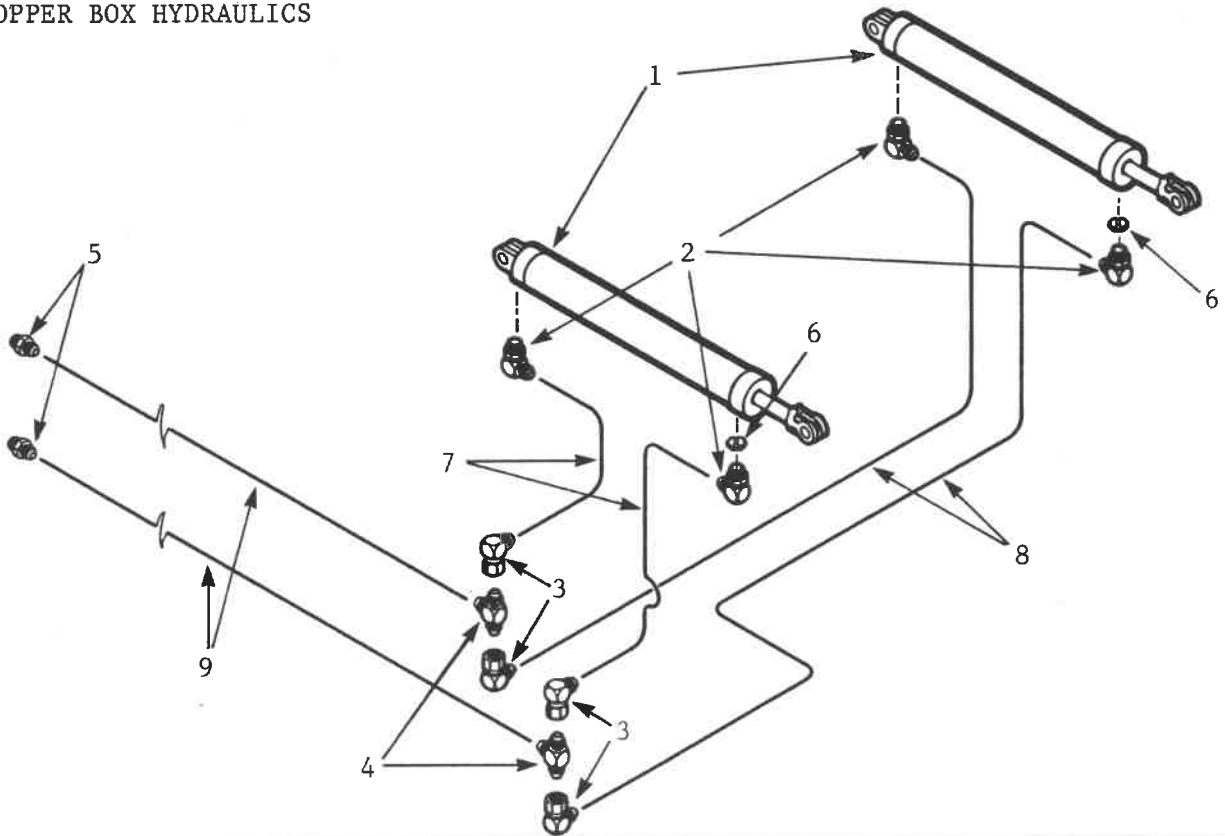
ITEM	PART NO.	DESCRIPTION	QTY
1	117089	Bearing Unit, Flanged - 4 Hole - 1 3/8 in.	A/R
2	117091	Casting, Flange - 4 Hole - 1 3/8 in. Bearing	1
3	117090	Insert, Bearing - 1 3/8 in.	1
4	117024	Collar, Lock - 1 3/8 in. Bearing	1
1	117006	Bearing Unit, Flanged - 4 Hole - 2 7/16 in.	A/R
2	117107	Casting, Flange - 4 Hole - 2 7/16 in. Bearing	1
3	117106	Insert, Bearing - 2 7/16 in.	1
4	117022	Collar, Lock 2 7/16 in. Bearing	1

HYDRAULICS LAYOUT

HITCH POLE HYDRAULICS



HOPPER BOX HYDRAULICS

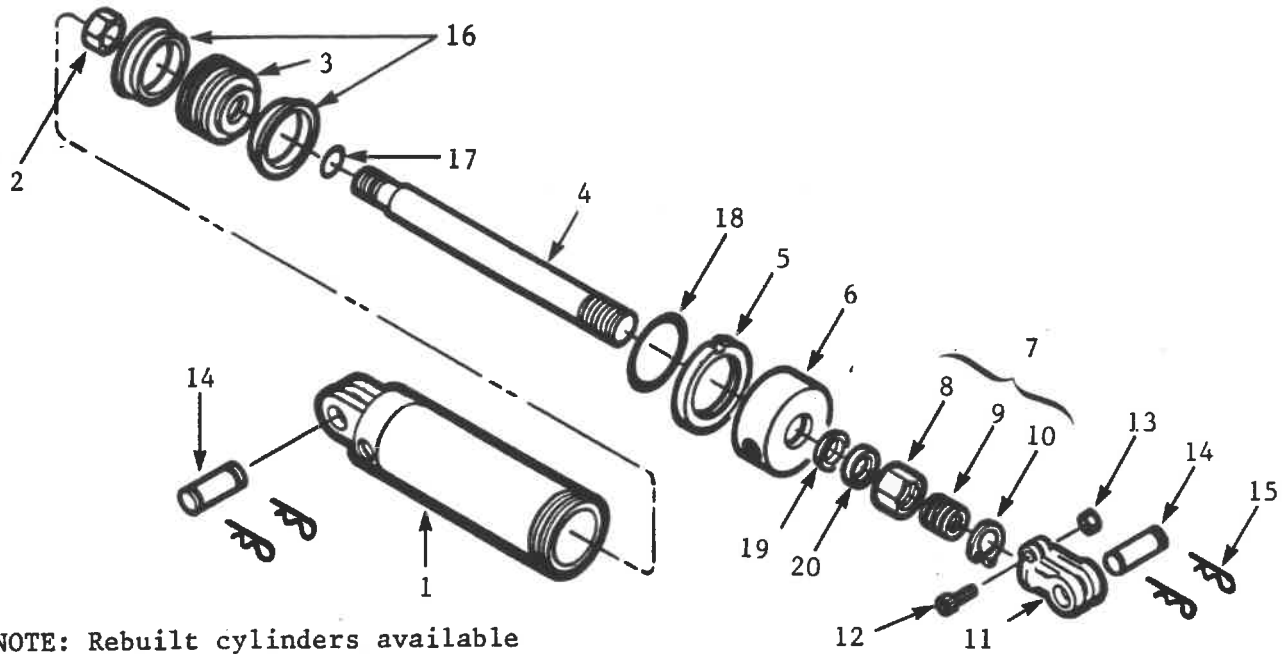


HYDRAULICS LAYOUT

ITEM	PART NO.	DESCRIPTION	QTY
1	121397	Cylinder, Hydraulic - 3 x 8 in. - U-Cup Type-DIL	1
2	141504	Elbow, 90° 3/4 JIC(M) x 3/4 ORB(M)	2
3	141514	Nipple 1/2 NPT(M) x 3/4 JIC(M)	2
4	126531	Hose 3/8 x 156 in. 2WB - 3/4 JIC(F-SW)	2

ITEM	PART NO.	DESCRIPTION	QTY
1	121601	Cylinder, Hydraulic - 3 x 31 in. c/w Pins-DIL	2
2	141504	Elbow, 90° 3/4 JIC(M) x 3/4 ORB(M)	4
3	141518	Elbow, 90° 3/4 JIC(M) x 3/4 JIC(F-SW)	4
4	141501	Tee 3/4 JIC(M) x (M) x (M)	2
5	141514	Nipple 1/2 NPT(M) x 3/4 JIC(M)	2
6	141506	Orifice Plate - .0700 in. ID - Hexagon	2
7	126538	Hose 3/8 x 66 in. 2WB - 3/4 JIC(F-SW)	2
8	126505	Hose 3/8 x 147 in. 2WB - 3/4 JIC(F-SW)	2
9	126574	Hose 3/8 x 174 in. 2WB - 3/4 JIC(F-SW)	2

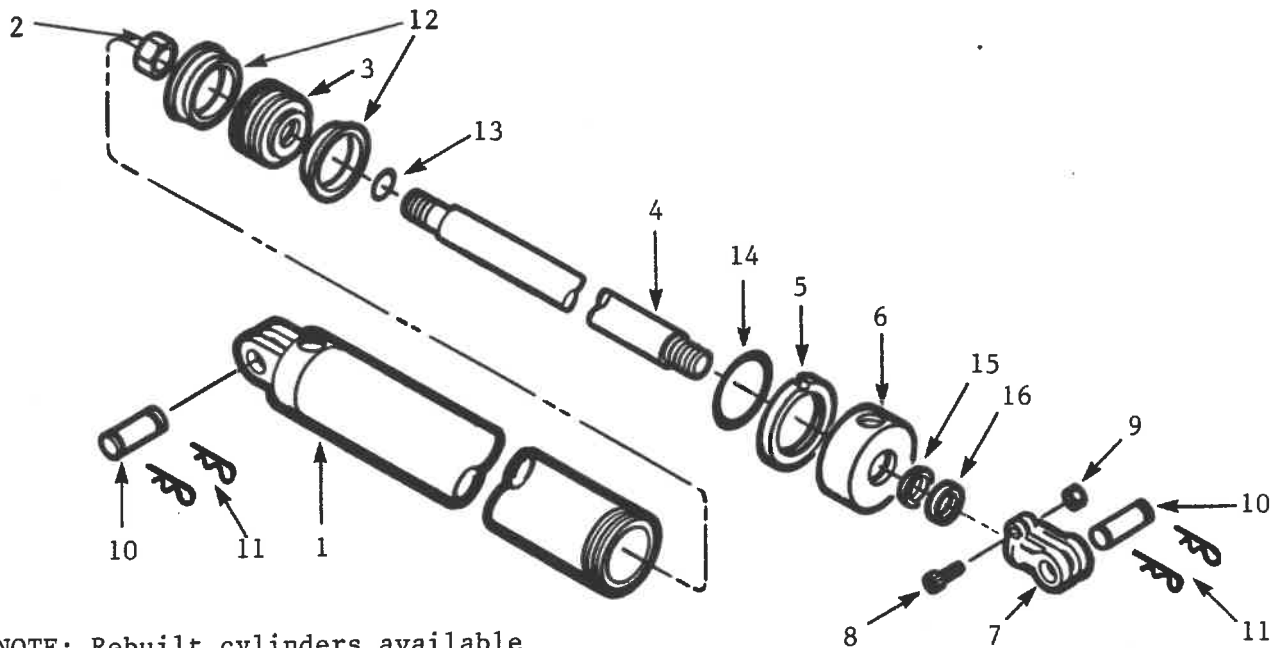
HYDRAULIC CYLINDER 3 x 8 in. STROKE - DIL



NOTE: Rebuilt cylinders available

ITEM	PART NO.	DESCRIPTION	QTY
	121397	Cylinder, Hydraulic - 3 x 8 in. U-Cup Type-DIL	1
1	121628	Barrel Assembly - 3 x 8 in.-DIL	1
2	118441	Nut, Lock 7/8 in. UNF, GR 5, Plated, Uni-torque	1
3	121606	Piston - 3 in. Dia. (U-Cup Type)-DIL	1
4	121618	Rod, Cylinder - 31.75 x 384 mm long - Plated	1
5	121746	Ring, Lock - 3 in.-DIL	1
6	121630	Cap, Open - 3 in. Cylinder, 1 1/4 in. Rod-DIL	1
7	121642	Depth Control Assembly - DIL Cylinder - Plated	1
8	--	Nut, Depth Control - DIL	1
9	--	Sleeve, Depth Control - DIL	1
10	--	Snap Ring	1
11	121631	Clevis, Rod 1 1/4-12 UNF - DIL	1
12	118311	Capscrew 3/8 x 1 3/4 in. - Allen	1
13	118403	Nut, Hex 3/8 in. UNC, GR 5, Plated	1
14	121619	Pin 25.4 x 73 mm long (effective) - Plated	2
15	118830	Pin, Hair 4.5 x 83 mm - Plated	4
16	--	Seal, U-Cup	2
17	--	Seal, O-Ring	1
18	--	Seal, O-Ring	1
19	--	Seal, U-Cup	1
20	--	Seal, Rod Wiper	1
	121719	Kit, Seal - 3 in. Cylinder - 1 1/4 in. Rod-DIL	1

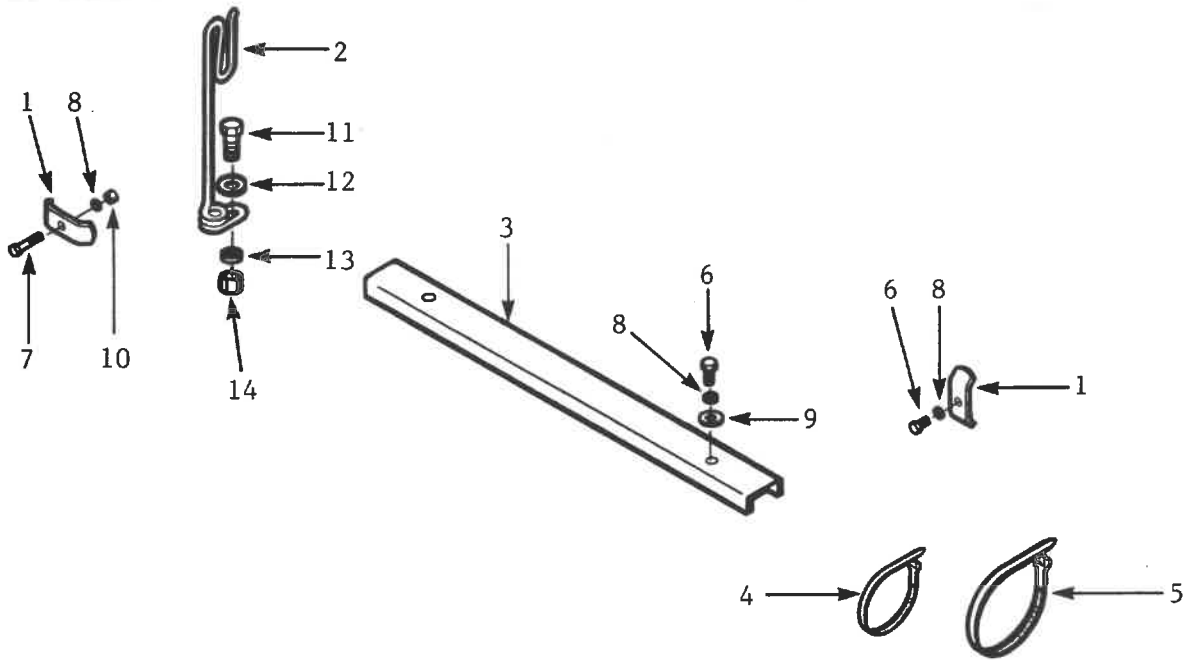
HYDRAULIC CYLINDER 3 x 31 in. STROKE - DIL



NOTE: Rebuilt cylinders available

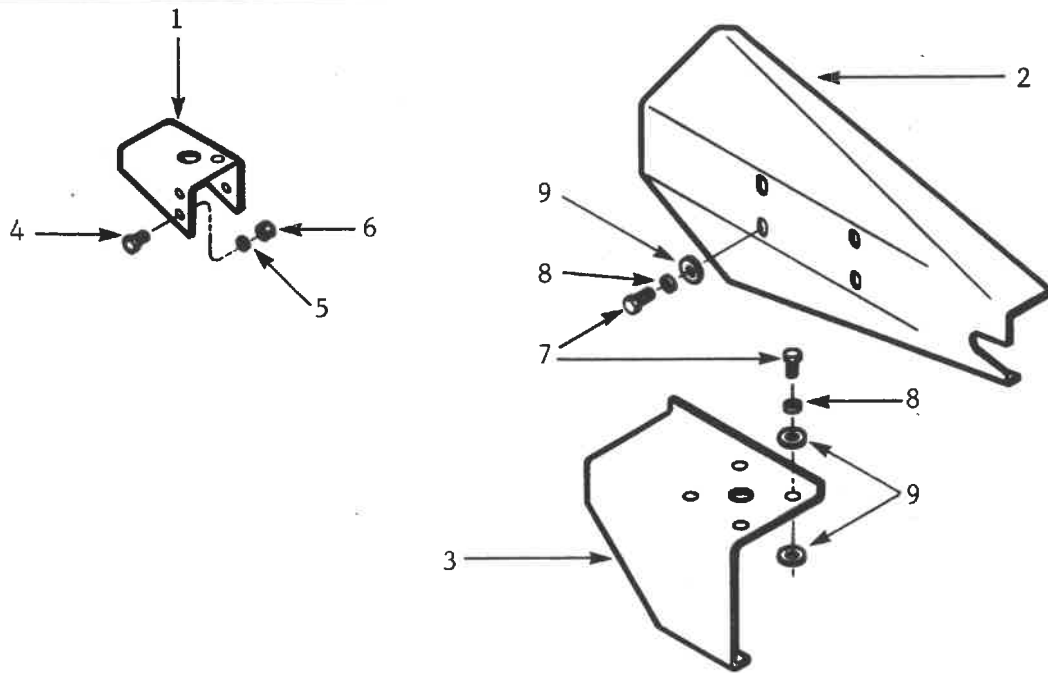
ITEM	PART NO.	DESCRIPTION	QTY
	121601	Cylinder, Hydraulic - 3 x 31 in. c/w Pins-DIL	1
1	121599	Barrel Assembly - 3 x 31 in.-DIL	1
2	118441	Nut, Lock 7/8 in. UNF, GR 5, Plated, Uni-torque	1
3	121606	Piston - 3 in. Dia. (U-Cup Type)-DIL	1
4	121605	Rod, Cylinder - 38.1 x 963 mm long - Plated	1
5	121746	Ring, Lock - 3 in.-DIL	1
6	121629	Cap, Open - 3 in. Cylinder 1 1/2 in. Rod-DIL	1
7	121631	Clevis, Rod 1 1/4-12 UNF-DIL	1
8	118311	Cap screw 3/8 x 1 3/4 in. - Allen	1
9	118403	Nut, Hex 3/8 in. UNC, GR 5, Plated	1
10	121619	Pin 25.4 x 73 mm long (effective) - Plated	2
11	118830	Pin, Hair 4.5 x 83 mm - Plated	4
12	--	Seal, U-Cup	2
13	--	Seal, O-Ring	1
14	--	Seal, O-Ring	1
15	--	Seal, U-Cup	1
16	--	Seal, Rod Wiper	1
	121612	Kit, Seal - 3 in. Cylinder - 1 1/2 in. Rod-DIL	1

HYDRAULICS - HOSE CLIPS, HOSE HOLDER, HOSE SHIELD, HOSE TIES



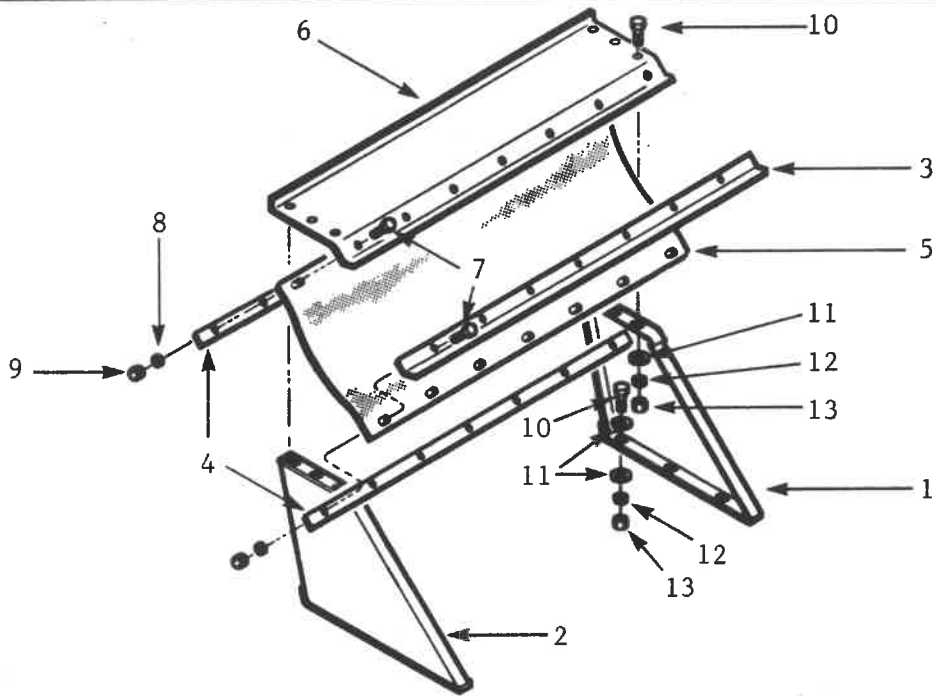
ITEM	PART NO.	DESCRIPTION	QTY
1	650256	Clip, Hose - 2 Hose	A/R
2	143111	Holder, Hose - Flexible	1
3	240246	Shield, - 4 Hose - 1219 mm long	1
4	133008	Tie, Hose - Plastic - Black - 3/32 x 9/64 x 11 in.	A/R
5	133007	Tie, Hose - Plastic - Releasable - 1/16 x 1/2 x 22 in.	A/R
6	118177	Bolt, Hex 5/16 x 3/4 in. UNC, GR 5, Plated	A/R
7	118144	Bolt, Hex 5/16 x 1 1/2 in. UNC, GR 5, Plated	A/R
8	118530	Washer, Lock 5/16 in., Plated	A/R
9	118538	Washer, Flat 5/16 in., Plated	A/R
10	118427	Nut, Hex 5/16 in. UNC, GR 5, Plated	A/R
11	118024	Bolt, Hex 5/8 x 1 1/2 in. UNC, GR 5, Plated	1
12	118514	Washer, Flat 5/8 in. Plated	1
13	118508	Washer, Lock 5/8 in. Plated	1
14	118407	Nut, Hex 5/8 in. UNC, GR 5, Plated	1

SAFETY SHIELDS



ITEM	PART NO.	DESCRIPTION	QTY
1	240245	Shield, Shaft - Front Bearing - RP/S2	1
2	240065	Shield, Chain - RP/S2	1
3	240244	Shield, Gear Box - RP/S2	1
4	118177	Bolt, Hex 5/16 x 3/4 in. UNC, GR 5, Plated	A/R
5	118530	Washer, Lock 5/16 in. Plated	A/R
6	118427	Nut, Hex 5/16 in. UNC, GR 5, Plated	A/R
7	118008	Bolt, Hex 1/2 x 1 in. UNC, GR 5, Plated	A/R
8	118504	Washer Lock 1/2 in. Plated	A/R
9	118512	Washer, Flat 1/2 in. Plated	A/R

ROCK GUARD UNIT



ITEM	PART NO.	DESCRIPTION	QTY
1	240227	Frame, Side - RH - Rock Guard - RP/S2	1
2	240229	Frame, Side - LH - Rock Guard - RP/S2	1
3	240237	Stiffener, Flap - RP/S2	1
4	240239	Bar, Bolt - 7 Hole - 280 mm Hole Centres	2
5	240238	Flap, Rock - 915 x 1870 mm long	1
6	240240	Plate, Top - Rock Guard - RP/S2	1
7	118136	Bolt, Hex 3/8 x 1 1/2 in. UNC, GR 5, Plated	14
8	118503	Washer, Lock 3/8 in. Plated	14
9	118403	Nut, Hex 3/8 in. UNC, GR 5, Plated	14
10	118024	Bolt, Hex 5/8 x 1 1/2 in. UNC, GR 5, Plated	12
11	118537	Washer, Flat 5/8 in. SAE, Plated	18
12	118508	Washer, Lock 5/8 in. Plated	12
13	118407	Nut, Hex 5/8 in. UNC, GR 5, Plated	12

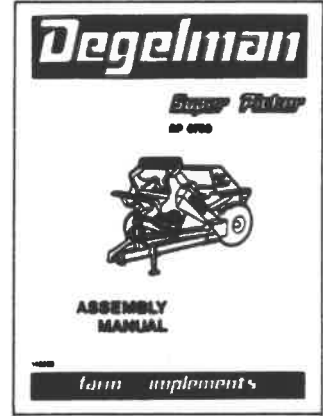
PUBLICATIONS



↑
1



↑
2



↑
3

ITEM	PART NO.	DESCRIPTION	QTY
1	142253	Manual - RP/S2 - Operators	1
2	142254	Manual - RP/S2 - Parts	1
3	142252	Manual - RP/S2 - Assembly	1

DECALS

1 **DANGER**
KEEP A SAFE DISTANCE
WHEN IN OPERATION
SE TENIR Á L'ÉCART QUAND
L'APPAREIL EST EN MARCHÉ

2 **DANGER**
ROTATING DRIVE LINE
FAILURE TO HEED THESE WARNINGS MAY
RESULT IN PERSONAL INJURY OR DEATH
**KEEP CLOTHING, YOURSELF
AND OTHERS WELL CLEAR**
DO NOT OPERATE MACHINE UNLESS P T O
GUARDS, TRACTOR MASTER SHIELD AND
IMPLEMENT GUARDS ARE IN PLACE
P T O SHAFT GUARDS MUST TURN AND
BE PROPERLY ATTACHED AND MAINTAINED
U-JOINT YOKES MUST BE SECURELY
LOCKED AT ALL LOCATIONS
BE SURE TRACTOR DRAWBAR AND HITCH
POLE ARE ADJUSTED CORRECTLY
GREASE TELESCOPING SHAFT REGULARLY
TO MINIMIZE THRUST FORCES
NEVER SIT, STAND OR STEP ON GUARDS
OR ON DRIVE SHAFT

3 **DANGER**
PRISE DE FORCE TOURNANTE
CELUI QUI NEGLIGE DE SUIVRE CES
DIRECTIVES PEUT ÊTRE BLESSÉ OU TUÉ
PERSONNE NE DOIT S'APPROCHER
DE L'APPAREIL NI EN
APPROCHER SES VÊTEMENTS
NE JAMAIS FAIRE FONCTIONNER L'APPAREIL SANS
QUE LES PROTECTEURS DE LA PRISE DE FORCE,
L'ÉCRAN PRINCIPAL DU TRACTEUR ET LES
PROTECTEURS DE L'ÉQUIPEMENT
COMPLÉMENTAIRE SOIENT EN PLACE
LES PROTECTEURS DE L'ARBRE DE LA PRISE DE
FORCE DOIVENT TOURNER ET ÊTRE BIEN FIXÉS ET
ENTRETIENS
LA FOURCHETTE DU JOINT EN U DOIT ÊTRE
SOLIDEMENT FIXÉE EN TOUS POINTS
S'ASSURER QUE LA BARRÉ D'ATTACHE DU
TRACTEUR ET LE BRAS DU CROCHET SOIENT BIEN
ARRÊTÉS
GRASSER L'ARBRE TELESCOPIQUE RÉGULIÈRE
MENT AFIN D'AMORTIR LES CHOC DE BUTÉE
NE JAMAIS S'ASSEoir NI PLACER LES PIEDS SUR
LES PROTECTEURS OU SUR L'ARBRE DE TRACTEUR
MISSION

4 **CAUTION** **ATTENTION**
REMOVE
RED TRANSPORT PINS
BEFORE OPERATING
RETIRER LES
CHEVILLES ROUGES DE
TRANSPORT AVANT LA
MISE EN MARCHÉ.

5 **CAUTION**
OVERTIGHTENING TORQUE
LIMITER WILL CAUSE
SERIOUS DAMAGE TO
GEAR BOX.
ATTENTION
UN LIMITEUR DE COUPLE DE
TORSION TROP SERRE
ENDOMMAGERA SÉRIEUSEMENT
LA BOÎTE DE VITESSE.

6 **WARNING**
DO NOT EXCEED 32 km/h
(20 mph) TRAILING SPEED
ATTENTION !
NE PAS DÉPASSER
32 km/h (20 milles) DE
VITESSE DE TRACTION

7 **WARNING**
1 READ AND UNDERSTAND THE OWNER'S
MANUAL BEFORE OPERATING
2 KEEP ALL SAFETY SHIELDS IN PLACE
3 MAKE SURE EVERYONE IS CLEAR OF
MACHINE BEFORE STARTING OPERATION
4 KEEP HANDS, FEET AND CLOTHING
AWAY FROM ALL MOVING PARTS
5 LOWER MACHINE TO GROUND OR REST
POSITION AND STOP TRACTOR ENGINE
BEFORE SERVICING OR CLEANING

8 **ATTENTION**
1 LIRE ET COMPRENDRE LE MANUEL DE L'USAGER
AVANT DE METTRE LA MACHINE EN MARCHÉ
2 GARDER EN PLACE TOUS LES ÉCRANS
PROTECTEURS
3 S'ASSURER QUE PERSONNE NE SE TROUVE PRÈS
DE L'APPAREIL AVANT DE LE METTRE EN MARCHÉ
4 NE JAMAIS S'APPROCHER LES MAINS, LES PIEDS NI
LES VÊTEMENTS DES PIÈCES EN MOUVEMENT
5 ABASSER L'INSTRUMENT SUR LE SOL OU À LA
POSITION DE REPOS ET ARRÊTER LE MOTEUR DU
TRACTEUR AVANT DE PROCÉDER À L'ENTRETIEN
OU AU NETTOYAGE DE LA MACHINE

9

Degelman ← 10

Degelman ← 11

Super Picker ← 13

RP-6700 ← 14

DECALS

ITEM	PART NO.	DESCRIPTION	QTY
1	142255	Decal, Danger - "Keep/Se Tenir . . ."	3
2	142110	Decal, Danger - "Rotating . . ."	2
3	142115	Decal, Danger - "Prise De . . ."	2
4	142256	Decal, Caution - "Remove/Retirer . . ."	1
5	142257	Decal, Caution - "Torque Limiter . . ."	1
6	142220	Decal, Warning - "Do Not Exceed . . ."	1
7	142014	Decal, Warning - "Read and . . ."	1
8	142116	Decal, Warning (Attention) - "Lire et Comp . . ."	1
9	142156	Decal, Slow Moving Vehicle	1
10	142009	Decal, Degelman - 3 3/4 x 16 1/4 in. long	1
11	142008	Decal, Degelman - 6 x 25 3/4 in. long	2
12	142248	Decal - Super	2
13	142250	Decal - Picker	2
14	142251	Decal - RP-6700	2

NOTES



**Our company
proudly displays the
FEMA Seal of Quality
on this equipment.**

**We were awarded this
registered trademark because:**

- **We provide complete operating instructions.**
- **We provide complete repair parts lists.**
- **We provide written warranty protection.**
- **We agree to provide ten year
parts availability.**

**Look for the Seal of Quality
when purchasing your next shortline equipment.**

Degelman



This Manual was Revised
and Reprinted May 85